

Product datasheet for **TA333711**

SLC26A1 Rabbit Polyclonal Antibody

Product data:

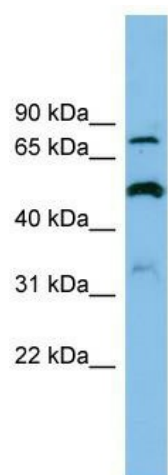
Product Type:	Primary Antibodies
Applications:	IHC, WB
Recommended Dilution:	WB
Reactivity:	Human
Host:	Rabbit
Isotype:	IgG
Clonality:	Polyclonal
Immunogen:	The immunogen for Anti-SLC26A1 Antibody: synthetic peptide directed towards the middle region of human SLC26A1. Synthetic peptide located within the following region: ACCSPPVRDILSRGGFLGEGPGDTAEEELFLSVHDAVQTARARHRELEA
Formulation:	Liquid. Purified antibody supplied in 1x PBS buffer with 0.09% (w/v) sodium azide and 2% sucrose. <i>Note that this product is shipped as lyophilized powder to China customers.</i>
Purification:	Affinity Purified
Conjugation:	Unconjugated
Storage:	Store at -20°C as received.
Stability:	Stable for 12 months from date of receipt.
Predicted Protein Size:	75 kDa
Gene Name:	solute carrier family 26 member 1
Database Link:	NP_071325 Entrez Gene 10861 Human Q9H2B4
Background:	SLC26A1 is a member of sulfate/anion transporter family. Family members are well conserved in their protein (aa length among species) structures, but have markedly different tissue expression patterns. Its gene is primarily expressed in the liver, pancreas, and brain.
Synonyms:	CAON; EDM4; SAT-1; SAT1
Note:	Immunogen sequence homology: Human: 100%; Dog: 79%; Horse: 79%; Bovine: 79%



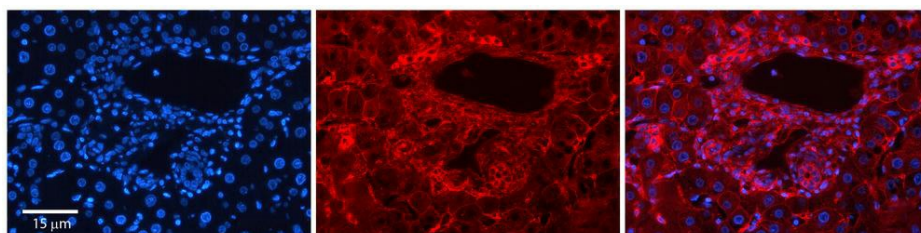
[View online »](#)

Protein Families: Transmembrane

Product images:



WB Suggested Anti-SLC26A1 Antibody Titration: 0.2-1 ug/ml; ELISA Titer: 1:312500; Positive Control: OVCAR-3 cell lysate; SLC26A1 is strongly supported by BioGPS gene expression data to be expressed in Human OVCAR3 cells



Rabbit Anti-SLC26A1 Antibody; Formalin Fixed Paraffin Embedded Tissue: Human Adult Liver; Observed Staining: Membrane in hepatocytes; Membrane and Cytoplasm in cells of the portal vein, hepatic arteries and bile ducts, strong signal, wide tissue distribut