

Product datasheet for **TA333710**

SLC26A1 Rabbit Polyclonal Antibody

Product data:

Product Type:	Primary Antibodies
Applications:	IHC, WB
Recommended Dilution:	WB, IHC
Reactivity:	Human
Host:	Rabbit
Isotype:	IgG
Clonality:	Polyclonal
Immunogen:	The immunogen for Anti-SLC26A1 Antibody: synthetic peptide directed towards the C terminal of human SLC26A1. Synthetic peptide located within the following region: LYSLTGLDAGCMAARRKEGGSETGVGEGGPAQGEDLGPVSTRAALVPAAA
Formulation:	Liquid. Purified antibody supplied in 1x PBS buffer with 0.09% (w/v) sodium azide and 2% sucrose. <i>Note that this product is shipped as lyophilized powder to China customers.</i>
Purification:	Affinity Purified
Conjugation:	Unconjugated
Storage:	Store at -20°C as received.
Stability:	Stable for 12 months from date of receipt.
Predicted Protein Size:	77 kDa
Gene Name:	solute carrier family 26 member 1
Database Link:	NP_071325 Entrez Gene 10861 Human Q9H2B4



[View online »](#)

Background:

SLC26A1 is a member of sulfate/anion transporter family. Family members are well conserved in their protein (aa length among species) structures, but have markedly different tissue expression patterns. Its gene is primarily expressed in the liver, pancreas, and brain. This gene is a member of a family of sulfate/anion transporter genes. Family members are well conserved in their genomic (number and size of exons) and protein (aa length among species) structures, but have markedly different tissue expression patterns. This gene is primarily expressed in the liver, pancreas, and brain. Three splice variants that encode different isoforms have been identified.

Synonyms:

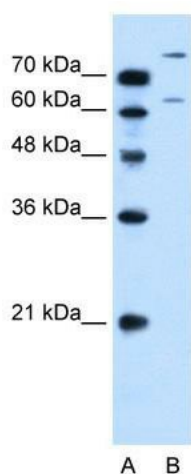
CAON; EDM4; SAT-1; SAT1

Note:

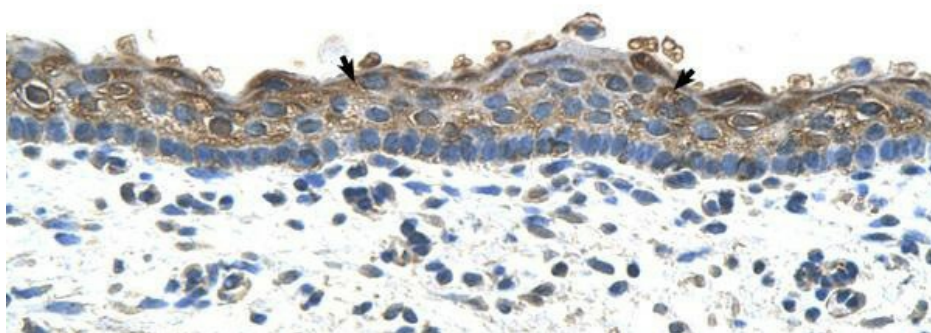
Immunogen sequence homology: Human: 100%

Protein Families:

Transmembrane

Product images:


WB Suggested Anti-SLC26A1 Antibody Titration:
0.2-1 ug/ml; Positive Control: HepG2 cell lysate



Human Skin