

Product datasheet for **TA333709**

MTBP Rabbit Polyclonal Antibody

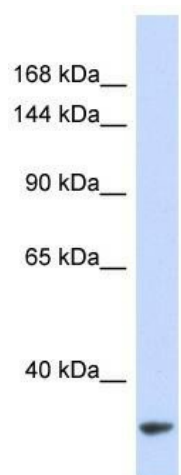
Product data:

Product Type:	Primary Antibodies
Applications:	WB
Recommended Dilution:	WB
Reactivity:	Human
Host:	Rabbit
Isotype:	IgG
Clonality:	Polyclonal
Immunogen:	The immunogen for Anti-MTBP Antibody is: synthetic peptide directed towards the middle region of Human MTBP. Synthetic peptide located within the following region: SLADLYEEAAENLHQLSDKLPAPGRAMVDIILLSDKDPPKLDYLPVVG
Formulation:	Liquid. Purified antibody supplied in 1x PBS buffer with 0.09% (w/v) sodium azide and 2% sucrose. <i>Note that this product is shipped as lyophilized powder to China customers.</i>
Purification:	Affinity Purified
Conjugation:	Unconjugated
Storage:	Store at -20°C as received.
Stability:	Stable for 12 months from date of receipt.
Predicted Protein Size:	36 kDa
Gene Name:	MDM2 binding protein
Database Link:	NP_071328 Entrez Gene 27085 Human Q96DY7
Background:	The function of this protein remains unknown.
Synonyms:	MDM2BP
Note:	Immunogen sequence homology: Dog: 100%; Pig: 100%; Rat: 100%; Horse: 100%; Human: 100%; Mouse: 100%; Bovine: 100%; Rabbit: 100%; Guinea pig: 85%; Zebrafish: 83%



[View online »](#)

Product images:



Host: Rabbit; Target Name: MTBP; Sample Tissue: 293T Whole cell lysates; Antibody Dilution: 1.0 ug/ml