

## Product datasheet for **TA333707**

### **BIGM103 (SLC39A8) Rabbit Polyclonal Antibody**

#### **Product data:**

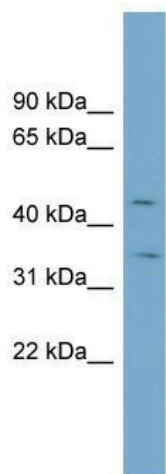
<b>Product Type:</b>	Primary Antibodies
<b>Applications:</b>	IHC, WB
<b>Recommended Dilution:</b>	WB, IHC
<b>Reactivity:</b>	Human, Rat
<b>Host:</b>	Rabbit
<b>Isotype:</b>	IgG
<b>Clonality:</b>	Polyclonal
<b>Immunogen:</b>	The immunogen for Anti-SLC39A8 Antibody: synthetic peptide directed towards the N terminal of human SLC39A8. Synthetic peptide located within the following region: QLNHFPCEDRPHKHKTRPSHSEVWGYGFLSVTIINLASLLGLLTPLIKKS
<b>Formulation:</b>	Liquid. Purified antibody supplied in 1x PBS buffer with 0.09% (w/v) sodium azide and 2% sucrose. <i>Note that this product is shipped as lyophilized powder to China customers.</i>
<b>Purification:</b>	Affinity Purified
<b>Conjugation:</b>	Unconjugated
<b>Storage:</b>	Store at -20°C as received.
<b>Stability:</b>	Stable for 12 months from date of receipt.
<b>Predicted Protein Size:</b>	50 kDa
<b>Gene Name:</b>	solute carrier family 39 member 8
<b>Database Link:</b>	<a href="#">NP_071437</a> <a href="#">Entrez Gene 64116 Human Q9C0K1</a>
<b>Background:</b>	This gene encodes a member of the SLC39 family of solute-carrier genes, which show structural characteristics of zinc transporters. The encoded protein is glycosylated and found in the plasma membrane and mitochondria, and functions in the cellular import
<b>Synonyms:</b>	BIGM103; CDG2N; LZT-Hs6; PP3105; ZIP8
<b>Note:</b>	Immunogen sequence homology: Human: 100%; Pig: 85%; Dog: 79%; Horse: 79%



[View online »](#)

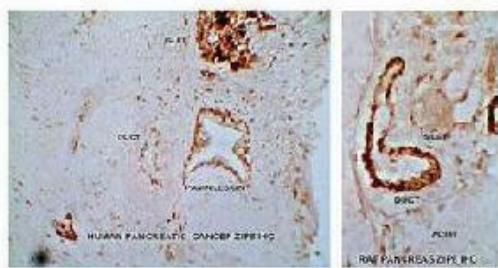
Protein Families: Transmembrane

**Product images:**



WB Suggested Anti-SLC39A8 Antibody Titration: 0.2-1 ug/ml; Positive Control: NCI-H226 cell lysate; There is BioGPS gene expression data showing that SLC39A8 is expressed in NCIH226

**SLC39A8 (ZIP8)**



Human Pancreatic Cancer

Rat Pancreas

Sample Type : Human Pancreas (Cancer) & rat pancreas  
 Primary Antibody Dilution : 1:150; Secondary Antibody : Goat anti-Rabbit; Secondary Antibody Dilution : 1:300; Gene Name : SLC39A8; Submitted by : Anonymous

See IHC 1 Data and Customer Feedback for more information