

## Product datasheet for **TA333706**

### TPK1 Rabbit Polyclonal Antibody

#### Product data:

Product Type:	Primary Antibodies
Applications:	WB
Recommended Dilution:	WB
Reactivity:	Human
Host:	Rabbit
Isotype:	IgG
Clonality:	Polyclonal
Immunogen:	The immunogen for Anti-TPK1 Antibody: synthetic peptide directed towards the N terminal of human TPK1. Synthetic peptide located within the following region: WNKALLRACADGGANRLYDITEGERESFLPEFINGDFDSIRPEVREYYAT
Formulation:	Liquid. Purified antibody supplied in 1x PBS buffer with 0.09% (w/v) sodium azide and 2% sucrose. <i>Note that this product is shipped as lyophilized powder to China customers.</i>
Purification:	Affinity Purified
Conjugation:	Unconjugated
Storage:	Store at -20°C as received.
Stability:	Stable for 12 months from date of receipt.
Predicted Protein Size:	27 kDa
Gene Name:	thiamin pyrophosphokinase 1
Database Link:	<a href="#">NP_071890</a> <a href="#">Entrez Gene 27010 Human</a> <a href="#">Q9H3S4</a>
Background:	TPK1 is a protein that exists as a homodimer, which catalyzes the conversion of thiamine to thiamine pyrophosphate. This gene encodes a protein, that exists as a homodimer, which catalyzes the conversion of thiamine to thiamine pyrophosphate. Alternate transcriptional splice variants, encoding different isoforms, have been characterized.
Synonyms:	HTPK1; PP20; THMD5



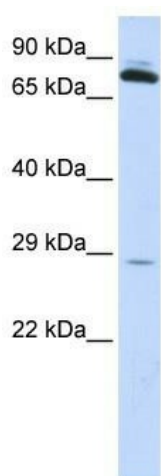
[View online »](#)

**Note:** Immunogen sequence homology: Pig: 100%; Human: 100%; Rat: 93%; Horse: 93%; Rabbit: 93%; Guinea pig: 93%; Dog: 86%; Mouse: 86%; Bovine: 86%

**Protein Families:** Druggable Genome

**Protein Pathways:** Metabolic pathways, Thiamine metabolism

**Product images:**



WB Suggested Anti-TPK1 Antibody Titration: 0.2-1 ug/ml; ELISA Titer: 1: 312500; Positive Control: Human Placenta