

Product datasheet for **TA333703**

ZNF336 (GZF1) Rabbit Polyclonal Antibody

Product data:

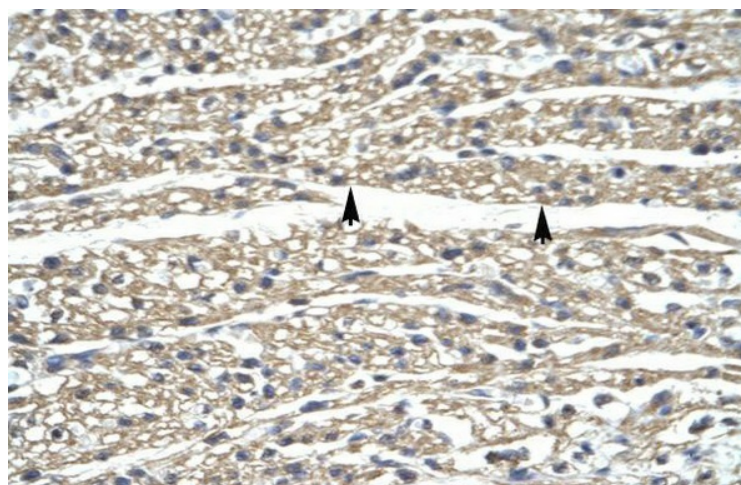
Product Type:	Primary Antibodies
Applications:	IHC, WB
Recommended Dilution:	WB, IHC
Reactivity:	Human
Host:	Rabbit
Isotype:	IgG
Clonality:	Polyclonal
Immunogen:	The immunogen for Anti-ZNF336 Antibody: synthetic peptide directed towards the N terminal of human ZNF336. Synthetic peptide located within the following region: LCDVTVSVEYQGVKDFMAHKAVLAATSKFFKEVFLNEKSVDGTRTNVYL
Formulation:	Liquid. Purified antibody supplied in 1x PBS buffer with 0.09% (w/v) sodium azide and 2% sucrose.
Purification:	Affinity Purified
Conjugation:	Unconjugated
Storage:	Store at -20°C as received.
Stability:	Stable for 12 months from date of receipt.
Predicted Protein Size:	80 kDa
Gene Name:	GDNF inducible zinc finger protein 1
Database Link:	NP_071927 Entrez Gene 64412 Human Q9H116
Background:	ZNF212 belongs to the C2H2-type zinc finger gene family. The zinc finger proteins are involved in gene regulation and development, and are quite conserved throughout evolution.
Synonyms:	ZBTB23; ZNF336
Note:	Immunogen sequence homology: Pig: 100%; Rat: 100%; Human: 100%; Mouse: 100%; Bovine: 93%; Guinea pig: 93%; Rabbit: 92%; Dog: 86%; Horse: 86%
Protein Families:	Transcription Factors


[View online »](#)

Product images:



WB Suggested Anti-ZNF336 Antibody Titration:
0.2-1 ug/ml; ELISA Titer: 1:12500; Positive Control:
HepG2 cell lysate



Human Heart