

Product datasheet for **TA333702**

Sec14I3 Rabbit Polyclonal Antibody

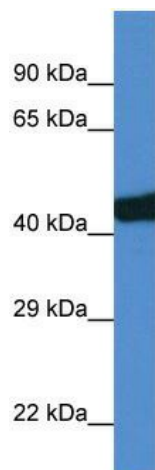
Product data:

Product Type:	Primary Antibodies
Applications:	WB
Recommended Dilution:	WB
Reactivity:	Rat
Host:	Rabbit
Isotype:	IgG
Clonality:	Polyclonal
Immunogen:	The immunogen for Anti-Sec14I3 Antibody: synthetic peptide corresponding to a region of Rat. Synthetic peptide located within the following region: RDQVKTYEHSVQISRGSSEQVEYELFPGCVLRWQFSSDGADIGFGVFL
Formulation:	Liquid. Purified antibody supplied in 1x PBS buffer with 0.09% (w/v) sodium azide and 2% sucrose.
Purification:	Affinity Purified
Conjugation:	Unconjugated
Storage:	Store at -20°C as received.
Stability:	Stable for 12 months from date of receipt.
Predicted Protein Size:	44 kDa
Gene Name:	SEC14-like lipid binding 3
Database Link:	NP_072130 Entrez Gene 64543 Rat
Background:	Sec14I3 is a probable hydrophobic ligand-binding protein; It may play a role in the transport of hydrophobic ligands like tocopherol, squalene and phospholipids.
Synonyms:	MGC119366; MGC119367; MGC119368; TAP2
Note:	Immunogen sequence homology: Dog: 100%; Pig: 100%; Rat: 100%; Horse: 100%; Human: 100%; Mouse: 100%; Rabbit: 100%; Guinea pig: 100%; Bovine: 93%



[View online »](#)

Product images:



WB Suggested Anti-Sec14I3 Antibody; Titration:
1.0 ug/ml; Positive Control: Rat Lung