

Product datasheet for **TA333699**

DEM1 (EXO5) Rabbit Polyclonal Antibody

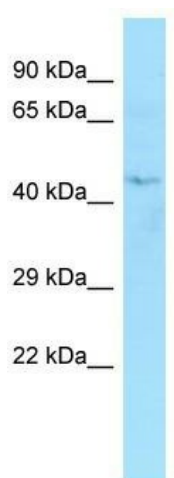
Product data:

Product Type:	Primary Antibodies
Applications:	WB
Recommended Dilution:	WB
Reactivity:	Human
Host:	Rabbit
Isotype:	IgG
Clonality:	Polyclonal
Immunogen:	The immunogen for Anti-DEM1 Antibody is: synthetic peptide directed towards the C-terminal region of Human DEM1. Synthetic peptide located within the following region: RPMLPLEAQKKKDCFCVSLYKYIFDAMVQGK/TPASLIHHTKLCLEKPLG
Formulation:	Liquid. Purified antibody supplied in 1x PBS buffer with 0.09% (w/v) sodium azide and 2% sucrose. <i>Note that this product is shipped as lyophilized powder to China customers.</i>
Purification:	Affinity Purified
Conjugation:	Unconjugated
Storage:	Store at -20°C as received.
Stability:	Stable for 12 months from date of receipt.
Predicted Protein Size:	41 kDa
Gene Name:	exonuclease 5
Database Link:	NP_073611 Entrez Gene 64789 Human Q9H790
Background:	DEM1 is a probable single strand DNA specific 5' exonuclease mitochondrial DNA replication and recombination.
Synonyms:	C1orf176; DEM1; Exo V; hExo5
Note:	Immunogen sequence homology: Human: 100%; Rabbit: 100%; Dog: 93%; Pig: 93%; Rat: 93%; Guinea pig: 93%; Horse: 86%; Mouse: 86%; Bovine: 83%



[View online »](#)

Product images:



WB Suggested Anti-DEM1 Antibody; Titration: 1.0 ug/ml; Positive Control: Placenta