

Product datasheet for **TA333698**

TUT1 Rabbit Polyclonal Antibody

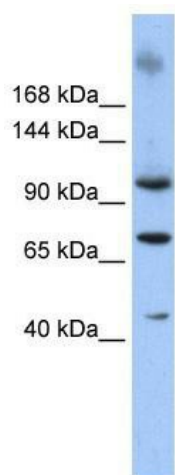
Product data:

Product Type:	Primary Antibodies
Applications:	WB
Recommended Dilution:	WB
Reactivity:	Human
Host:	Rabbit
Isotype:	IgG
Clonality:	Polyclonal
Immunogen:	The immunogen for Anti-TUT1 Antibody: synthetic peptide directed towards the N terminal of human TUT1. Synthetic peptide located within the following region: CDLDFLDLGDLEEQVPVKAPESPSLDSALASPLDPQALACTPASPPDS
Formulation:	Liquid. Purified antibody supplied in 1x PBS buffer with 0.09% (w/v) sodium azide and 2% sucrose.
Purification:	Affinity Purified
Conjugation:	Unconjugated
Storage:	Store at -20°C as received.
Stability:	Stable for 12 months from date of receipt.
Predicted Protein Size:	94 kDa
Gene Name:	terminal uridylyl transferase 1, U6 snRNA-specific
Database Link:	NP_073741 Entrez Gene 64852 Human Q9H6E5
Background:	TUT1 is a nucleotidyl transferase that functions as both a terminal uridylyltransferase and a nuclear poly(A) polymerase. TUT1 specifically adds and removes nucleotides from the 3' end of small nuclear RNAs and select mRNAs and may function in controlling gene expression and cell proliferation. TUT1 specifically catalyzes uridylylation of U6 snRNA (RNU6; MIM 180692) and is essential for cell proliferation (Trippe et al., 2006 [PubMed 16790842]). [supplied by OMIM]
Synonyms:	PAPD2; RBM21; STARPAP; TUTase; URLC6


[View online »](#)

Note: Immunogen sequence homology: Dog: 100%; Pig: 100%; Horse: 100%; Human: 100%; Bovine: 100%; Guinea pig: 100%; Rabbit: 93%; Mouse: 79%

Product images:



WB Suggested Anti-TUT1 Antibody Titration: 0.2-1 ug/ml; ELISA Titer: 1:1562500; Positive Control: 293T cell lysate