

## Product datasheet for **TA333697**

### CTIP2 (BCL11B) Rabbit Polyclonal Antibody

#### Product data:

Product Type:	Primary Antibodies
Applications:	IHC, WB
Recommended Dilution:	WB, IHC
Reactivity:	Human
Host:	Rabbit
Isotype:	IgG
Clonality:	Polyclonal
Immunogen:	The immunogen for Anti-BCL11B Antibody: synthetic peptide directed towards the middle region of human BCL11B. Synthetic peptide located within the following region: QASKLKRHMKTHMHKAGSLAGRSDDGLSAASSPEPGTSELAGEGLKAADG
Formulation:	Liquid. Purified antibody supplied in 1x PBS buffer with 0.09% (w/v) sodium azide and 2% sucrose. <i>Note that this product is shipped as lyophilized powder to China customers.</i>
Purification:	Affinity Purified
Conjugation:	Unconjugated
Storage:	Store at -20°C as received.
Stability:	Stable for 12 months from date of receipt.
Predicted Protein Size:	88 kDa
Gene Name:	B-cell CLL/lymphoma 11B
Database Link:	<a href="#">NP_075049</a> <a href="#">Entrez Gene 64919 Human</a> <a href="#">Q9C0K0</a>



[View online »](#)

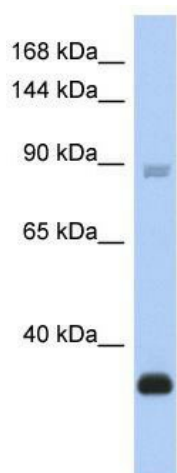
**Background:** BCL11B is the tumor-suppressor protein involved in T-cell lymphomas. BCL11B may function on the P53-signaling pathway. BCL11B may be a key regulator of both differentiation and survival during thymocyte development. BCL11B repress transcription through direct, TFCOUP2-independent binding to a GC-rich response element. This gene encodes a C2H2-type zinc finger protein and is closely related to BCL11A, a gene whose translocation may be associated with B-cell malignancies. The specific function of this gene has not yet been determined. Two alternatively spliced transcript variants, which encode distinct isoforms, have been reported.

**Synonyms:** ATL1; ATL1-alpha; ATL1-beta; ATL1-delta; ATL1-gamma; CTIP-2; CTIP2; hRIT1-alpha; RIT1; ZNF856B

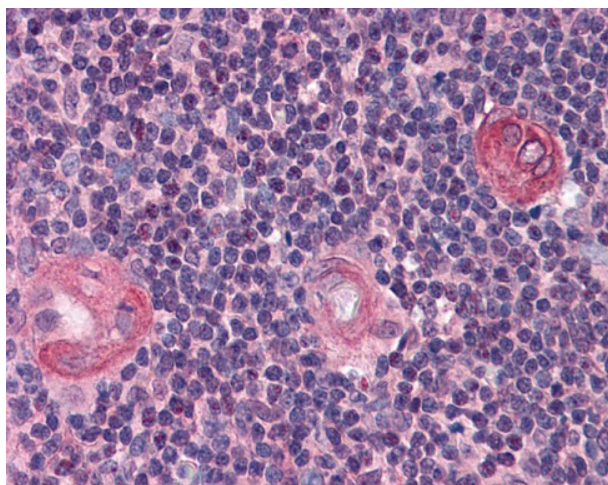
**Note:** Immunogen sequence homology: Dog: 100%; Pig: 100%; Rat: 100%; Horse: 100%; Human: 100%; Mouse: 100%; Bovine: 100%; Rabbit: 100%; Guinea pig: 100%

**Protein Families:** Druggable Genome

### Product images:



WB Suggested Anti-BCL11B Antibody Titration:  
0.2-1 ug/ml; ELISA Titer: 1:12500; Positive Control:  
THP-1 cell lysate



Thymus