

Product datasheet for **TA333691**

Agtppb1 Rabbit Polyclonal Antibody

Product data:

Product Type:	Primary Antibodies
Applications:	WB
Recommended Dilution:	WB
Reactivity:	Mouse
Host:	Rabbit
Isotype:	IgG
Clonality:	Polyclonal
Immunogen:	The immunogen for Anti-Agtppb1 Antibody is: synthetic peptide directed towards the C-terminal region of Mouse Agtppb1. Synthetic peptide located within the following region: GMQPLMYSVQEALNARPWWIRMGTDICYKHNHFSRSSVAAGGQKGSYYT
Formulation:	Liquid. Purified antibody supplied in 1x PBS buffer with 0.09% (w/v) sodium azide and 2% sucrose. <i>Note that this product is shipped as lyophilized powder to China customers.</i>
Purification:	Affinity Purified
Conjugation:	Unconjugated
Storage:	Store at -20°C as received.
Stability:	Stable for 12 months from date of receipt.
Predicted Protein Size:	128 kDa
Gene Name:	ATP/GTP binding protein 1
Database Link:	NP_075817 Entrez Gene 67269 Mouse Q641K1



[View online »](#)

Background:

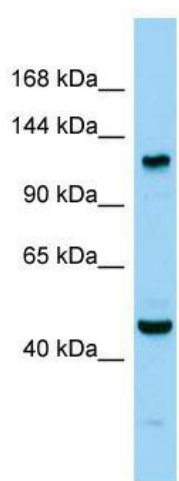
Agtppb1 is a metallocarboxypeptidase that mediates deglutamylation of target proteins. It catalyzes the deglutamylation of polyglutamate side chains generated by post-translational polyglutamylation in proteins such as tubulins. It also removes gene-encoded polyglutamates from the carboxy-terminus of target proteins such as MYLK. Agtppb1 acts as a long-chain deglutamylase and specifically shortens long polyglutamate chains, while it is not able to remove the branching point glutamate, a process catalyzed by AGL5/CCP5. Deglutamylation plays a key role in cerebellar Purkinje cell differentiation, accumulation of tubulin polyglutamylation causing neurodegeneration.

Synonyms:

CCP1; DKFZp686M20191; KIAA1035; NNA1

Note:

Immunogen sequence homology: Dog: 100%; Rat: 100%; Horse: 100%; Human: 100%; Mouse: 100%; Rabbit: 100%; Pig: 93%; Bovine: 93%; Guinea pig: 93%; Zebrafish: 92%

Product images:

Host: Rabbit; Target Name: Agtppb1; Sample Tissue: Mouse Testis lysates; Antibody Dilution: 1.0 ug/ml