

## Product datasheet for **TA333690**

### CAPRIN2 Rabbit Polyclonal Antibody

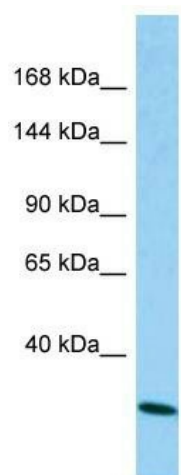
#### Product data:

Product Type:	Primary Antibodies
Applications:	WB
Recommended Dilution:	WB
Reactivity:	Human
Host:	Rabbit
Isotype:	IgG
Clonality:	Polyclonal
Immunogen:	The immunogen for Anti-CAPRIN2 Antibody is: synthetic peptide directed towards the N-terminal region of Human CAPRIN2. Synthetic peptide located within the following region: FGYQSPSGHSEEEEREGNMKSAKPQVNHSQHGESQRALSPLQSTLSSAASP
Formulation:	Liquid. Purified antibody supplied in 1x PBS buffer with 0.09% (w/v) sodium azide and 2% sucrose. <i>Note that this product is shipped as lyophilized powder to China customers.</i>
Purification:	Affinity Purified
Conjugation:	Unconjugated
Storage:	Store at -20°C as received.
Stability:	Stable for 12 months from date of receipt.
Predicted Protein Size:	30 kDa
Gene Name:	caprin family member 2
Database Link:	<a href="#">NP_076414</a> <a href="#">Entrez Gene 65981 Human</a> <a href="#">Q6IMN6</a>
Background:	The protein encoded by this gene may be involved in the transitioning of erythroblasts from a highly proliferative state to a terminal phase of differentiation. High level expression of the encoded protein can lead to apoptosis. Several transcript variants encoding different isoforms have been found for this gene.
Synonyms:	C1QDC1; EEG-1; EEG1; RNG140
Note:	Immunogen sequence homology: Human: 100%; Dog: 93%; Horse: 92%; Pig: 79%



[View online »](#)

## Product images:



Host: Rabbit; Target Name: CAPRIN2; Sample Tissue: A549 Whole Cell lysates; Antibody Dilution: 1.0 ug/ml; CAPRIN2 is supported by BioGPS gene expression data to be expressed in A549