

Product datasheet for **TA333687**

WDR18 Rabbit Polyclonal Antibody

Product data:

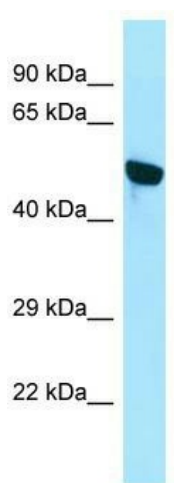
Product Type:	Primary Antibodies
Applications:	WB
Recommended Dilution:	WB
Reactivity:	Human
Host:	Rabbit
Isotype:	IgG
Clonality:	Polyclonal
Immunogen:	The immunogen for Anti-WDR18 Antibody is: synthetic peptide directed towards the N-terminal region of Human WDR18. Synthetic peptide located within the following region: PMWSCIVWELHSGANLLTYRGGQAGPRGLALLNGEYLLAAQLGKNYISAW
Formulation:	Liquid. Purified antibody supplied in 1x PBS buffer with 0.09% (w/v) sodium azide and 2% sucrose. <i>Note that this product is shipped as lyophilized powder to China customers.</i>
Purification:	Affinity Purified
Conjugation:	Unconjugated
Storage:	Store at -20°C as received.
Stability:	Stable for 12 months from date of receipt.
Predicted Protein Size:	48 kDa
Gene Name:	WD repeat domain 18
Database Link:	NP_077005 Entrez Gene 57418 Human Q9BV38
Background:	This gene encodes a member of the WD repeat protein family. WD repeats are minimally conserved regions of approximately 40 amino acids typically bracketed by gly-his and trp-asp (GH-WD), which may facilitate formation of heterotrimeric or multiprotein complexes. Members of this family are involved in a variety of cellular processes, including cell cycle progression, signal transduction, apoptosis, and gene regulation.
Synonyms:	Ipi3; R32184_1



[View online »](#)

Note: Immunogen sequence homology: Pig: 100%; Rat: 100%; Horse: 100%; Human: 100%; Mouse: 100%; Bovine: 100%; Guinea pig: 93%

Product images:



WB Suggested Anti-WDR18 Antibody; Titration: 1.0 ug/ml; Positive Control: Jurkat Whole Cell
WDR18 is supported by BioGPS gene expression data to be expressed in Jurkat