

Product datasheet for **TA333685**

ZNF426 Rabbit Polyclonal Antibody

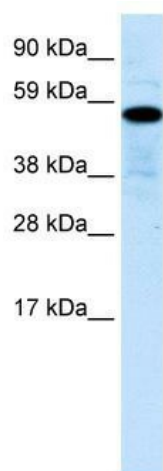
Product data:

Product Type:	Primary Antibodies
Applications:	WB
Recommended Dilution:	WB
Reactivity:	Human
Host:	Rabbit
Isotype:	IgG
Clonality:	Polyclonal
Immunogen:	The immunogen for Anti-ZNF426 Antibody: synthetic peptide directed towards the N terminal of human ZNF426. Synthetic peptide located within the following region: VMLENYKNLATVGGQIIKPSLISWLEQESRTVQGGVLQGWEMRLETQWS
Formulation:	Liquid. Purified antibody supplied in 1x PBS buffer with 0.09% (w/v) sodium azide and 2% sucrose. <i>Note that this product is shipped as lyophilized powder to China customers.</i>
Purification:	Affinity Purified
Conjugation:	Unconjugated
Storage:	Store at -20°C as received.
Stability:	Stable for 12 months from date of receipt.
Predicted Protein Size:	63 kDa
Gene Name:	zinc finger protein 426
Database Link:	NP_077011 Entrez Gene 79088 Human Q9BUY5
Background:	Located on chromosome 19, this gene encodes for zinc finger protein 426.
Synonyms:	K-RBP
Note:	Immunogen sequence homology: Human: 100%; Rat: 86%; Mouse: 86%
Protein Families:	Transcription Factors



[View online »](#)

Product images:



WB Suggested Anti-ZNF426 Antibody Titration:
0.2-1 ug/ml; ELISA Titer: 1:312500; Positive
Control: Human Liver