

Product datasheet for **TA333683**

FATP3 (SLC27A3) Rabbit Polyclonal Antibody

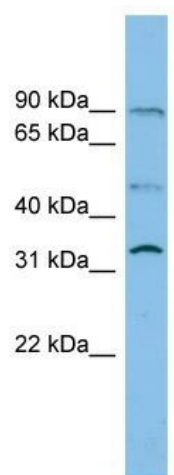
Product data:

Product Type:	Primary Antibodies
Applications:	WB
Recommended Dilution:	WB
Reactivity:	Human
Host:	Rabbit
Isotype:	IgG
Clonality:	Polyclonal
Immunogen:	The immunogen for Anti-SLC27A3 Antibody: synthetic peptide directed towards the middle region of human SLC27A3. Synthetic peptide located within the following region: PFSLIRYDVTTGPIRDPQGHCMATSPGEPGLLVAPVSQQSPFLGYAGGP
Formulation:	Liquid. Purified antibody supplied in 1x PBS buffer with 0.09% (w/v) sodium azide and 2% sucrose.
Purification:	Affinity Purified
Conjugation:	Unconjugated
Storage:	Store at -20°C as received.
Stability:	Stable for 12 months from date of receipt.
Predicted Protein Size:	79 kDa
Gene Name:	solute carrier family 27 member 3
Database Link:	NP_077306 Entrez Gene 11000 Human Q5K4L6
Background:	SLC27A3 has acyl-CoA ligase activity for long-chain and very-long-chain fatty acids.SLC27A3 does not exhibit fatty acid transport activity.
Synonyms:	ACSVL3; FATP3; VLCS-3
Note:	Immunogen sequence homology: Dog: 100%; Pig: 100%; Rat: 100%; Human: 100%; Mouse: 100%; Sheep: 100%; Bovine: 100%; Guinea pig: 100%; Horse: 93%; Rabbit: 93%
Protein Families:	Transmembrane



[View online »](#)

Product images:



WB Suggested Anti-SLC27A3 Antibody Titration:
0.2-1 ug/ml; ELISA Titer: 1:312500; Positive
Control: PANC1 cell lysate