

## Product datasheet for **TA333681**

### ZKSCAN3 Rabbit Polyclonal Antibody

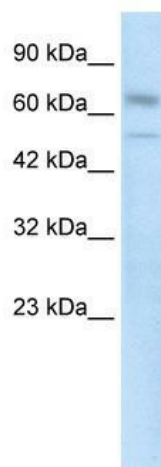
#### Product data:

Product Type:	Primary Antibodies
Applications:	WB
Recommended Dilution:	WB
Reactivity:	Human
Host:	Rabbit
Isotype:	IgG
Clonality:	Polyclonal
Immunogen:	The immunogen for Anti-ZNF306 Antibody: synthetic peptide directed towards the N terminal of human ZNF306. Synthetic peptide located within the following region: ARELSESTALDAQSTEDQMELLVIKVEEEEAGFPSSPDLGSEGSRRERFRG
Formulation:	Liquid. Purified antibody supplied in 1x PBS buffer with 0.09% (w/v) sodium azide and 2% sucrose. <i>Note that this product is shipped as lyophilized powder to China customers.</i>
Purification:	Affinity Purified
Conjugation:	Unconjugated
Storage:	Store at -20°C as received.
Stability:	Stable for 12 months from date of receipt.
Predicted Protein Size:	61 kDa
Gene Name:	zinc finger with KRAB and SCAN domains 3
Database Link:	<a href="#">NP_077819</a> <a href="#">Entrez Gene 80317 Human</a> <a href="#">Q9BRR0</a>
Background:	ZNF306 is a new candidate transcription factor.
Synonyms:	dj874C20.1; dj874C20.1.; ZF47; zfp-47; Zfp47; ZFP306; ZNF306; ZNF309; ZSCAN13; ZSCAN35
Note:	Immunogen sequence homology: Dog: 100%; Human: 100%; Rabbit: 100%
Protein Families:	Transcription Factors



[View online »](#)

## Product images:



WB Suggested Anti-ZNF306 Antibody Titration:  
0.2-1 ug/ml; Positive Control: Human Kidney