

Product datasheet for **TA333678**

Arylsulfatase J (ARSJ) Rabbit Polyclonal Antibody

Product data:

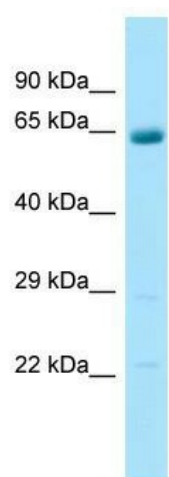
Product Type:	Primary Antibodies
Applications:	WB
Recommended Dilution:	WB
Reactivity:	Human
Host:	Rabbit
Isotype:	IgG
Clonality:	Polyclonal
Immunogen:	The immunogen for Anti-ARSJ Antibody is: synthetic peptide directed towards the C-terminal region of Human ARSJ. Synthetic peptide located within the following region: VWGPWYKEETKKKKPSKNQAEKKQKSKKKKKKQKAVSGSTCHSGVTCG
Formulation:	Liquid. Purified antibody supplied in 1x PBS buffer with 0.09% (w/v) sodium azide and 2% sucrose. <i>Note that this product is shipped as lyophilized powder to China customers.</i>
Purification:	Affinity Purified
Conjugation:	Unconjugated
Storage:	Store at -20°C as received.
Stability:	Stable for 12 months from date of receipt.
Predicted Protein Size:	57 kDa
Gene Name:	arylsulfatase family member J
Database Link:	NP_078866 Entrez Gene 79642 Human Q5FYB0
Background:	Sulfatases, such as ARSJ, hydrolyze sulfate esters from sulfated steroids, carbohydrates, proteoglycans, and glycolipids. They are involved in hormone biosynthesis, modulation of cell signaling, and degradation of macromolecules.
Synonyms:	FLJ23548
Note:	Immunogen sequence homology: Human: 100%; Dog: 93%; Horse: 86%; Bovine: 85%



[View online »](#)

Protein Families: Druggable Genome, Secreted Protein

Product images:



WB Suggested Anti-ARSJ Antibody; Titration: 1.0 ug/ml; Positive Control: Fetal Lung