

## Product datasheet for **TA333676**

### SLC12A8 Rabbit Polyclonal Antibody

#### Product data:

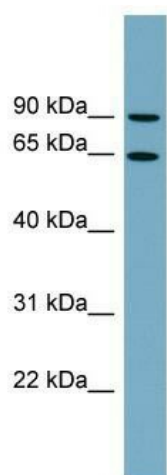
Product Type:	Primary Antibodies
Applications:	WB
Recommended Dilution:	WB
Reactivity:	Human
Host:	Rabbit
Isotype:	IgG
Clonality:	Polyclonal
Immunogen:	The immunogen for Anti-SLC12A8 Antibody: synthetic peptide directed towards the N terminal of human SLC12A8. Synthetic peptide located within the following region: IIRLQLLLLFLLAVSTLDFVVGSTHLDPEHGFIGYSPELLQNNTLPDYS
Formulation:	Liquid. Purified antibody supplied in 1x PBS buffer with 0.09% (w/v) sodium azide and 2% sucrose. <i>Note that this product is shipped as lyophilized powder to China customers.</i>
Purification:	Affinity Purified
Conjugation:	Unconjugated
Storage:	Store at -20°C as received.
Stability:	Stable for 12 months from date of receipt.
Predicted Protein Size:	78 kDa
Gene Name:	solute carrier family 12 member 8
Database Link:	<a href="#">NP_078904</a> <a href="#">Entrez Gene 84561 Human</a> <a href="#">A0AV02</a>
Background:	SLC12A8 is a cation/chloride cotransporter that may play a role in the control of keratinocyte proliferation.
Synonyms:	CCC9
Note:	Immunogen sequence homology: Dog: 100%; Pig: 100%; Rat: 100%; Horse: 100%; Human: 100%; Mouse: 100%; Bovine: 100%; Rabbit: 100%; Guinea pig: 100%



[View online »](#)

Protein Families: Druggable Genome, Transmembrane

### Product images:



WB Suggested Anti-SLC12A8 Antibody Titration:  
0.2-1 ug/ml; Positive Control: THP-1 cell lysate