

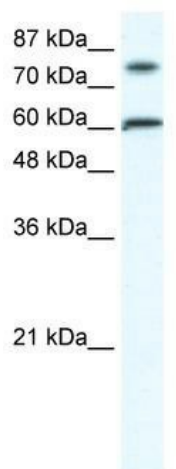
Product datasheet for **TA333673**

ZNF768 Rabbit Polyclonal Antibody

Product data:

Product Type:	Primary Antibodies
Applications:	WB
Recommended Dilution:	WB
Reactivity:	Human
Host:	Rabbit
Isotype:	IgG
Clonality:	Polyclonal
Immunogen:	The immunogen for Anti-ZNF768 Antibody: synthetic peptide directed towards the N terminal of human FLJ23436. Synthetic peptide located within the following region: EPESPGFESRSPGLVPPSPEFAPRSPESDSQSPEFESQSPRYEPQSPGYE
Formulation:	Liquid. Purified antibody supplied in 1x PBS buffer with 0.09% (w/v) sodium azide and 2% sucrose.
Purification:	Affinity Purified
Conjugation:	Unconjugated
Storage:	Store at -20°C as received.
Stability:	Stable for 12 months from date of receipt.
Predicted Protein Size:	58 kDa
Gene Name:	zinc finger protein 768
Database Link:	NP_078947 Entrez Gene 79724 Human Q9H5H4
Background:	FLJ23436 is a hypothetical protein
Synonyms:	FLJ23436
Note:	Immunogen sequence homology: Rat: 100%; Human: 100%; Rabbit: 100%; Pig: 92%; Horse: 92%; Mouse: 92%; Dog: 85%; Bovine: 85%; Guinea pig: 77%
Protein Families:	Transcription Factors


[View online »](#)

Product images:


WB Suggested Anti-FLJ23436 Antibody Titration:
1.25 ug/ml; Positive Control: Raji cell
lysateZNF768 is supported by BioGPS gene
expression data to be expressed in Raji