

Product datasheet for **TA333672**

C11ORF67 (AAMDC) Rabbit Polyclonal Antibody

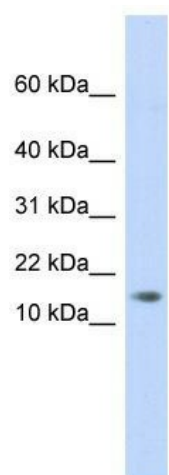
Product data:

Product Type:	Primary Antibodies
Applications:	WB
Recommended Dilution:	WB
Reactivity:	Human
Host:	Rabbit
Isotype:	IgG
Clonality:	Polyclonal
Immunogen:	The immunogen for Anti-AAMDC Antibody: synthetic peptide directed towards the middle region of human AAMDC. Synthetic peptide located within the following region: SEALKVPSSTVEYLKKGIDVRLQTEQAVKEYNALVAQGVRVGGVFHST
Formulation:	Liquid. Purified antibody supplied in 1x PBS buffer with 0.09% (w/v) sodium azide and 2% sucrose. <i>Note that this product is shipped as lyophilized powder to China customers.</i>
Purification:	Affinity Purified
Conjugation:	Unconjugated
Storage:	Store at -20°C as received.
Stability:	Stable for 12 months from date of receipt.
Predicted Protein Size:	13 kDa
Gene Name:	adipogenesis associated, Mth938 domain containing
Database Link:	NP_078960 Entrez Gene 28971 Human Q9H7C9
Background:	The exact function of AAMDC remains unknown.
Synonyms:	C11orf67; CK067; PTD015
Note:	Immunogen sequence homology: Pig: 100%; Rat: 100%; Horse: 100%; Human: 100%; Mouse: 100%; Bovine: 100%; Rabbit: 100%; Guinea pig: 100%; Dog: 92%; Zebrafish: 85%



[View online »](#)

Product images:



WB Suggested Anti-C11orf67 Antibody Titration:
0.2-1 ug/ml; ELISA Titer: 1: 312500; Positive
Control: Human Placenta