

## Product datasheet for **TA333671**

### SLC25A22 Rabbit Polyclonal Antibody

#### Product data:

Product Type:	Primary Antibodies
Applications:	IHC, WB
Recommended Dilution:	WB, IHC
Reactivity:	Human
Host:	Rabbit
Isotype:	IgG
Clonality:	Polyclonal
Immunogen:	The immunogen for Anti-SLC25A22 Antibody: synthetic peptide directed towards the N terminal of human SLC25A22. Synthetic peptide located within the following region: LQDAGRIAAQRKILAAQGQLSAQGGGAQPSVEAPAAPRPTATQLTRDLLRS
Formulation:	Liquid. Purified antibody supplied in 1x PBS buffer with 0.09% (w/v) sodium azide and 2% sucrose. <i>Note that this product is shipped as lyophilized powder to China customers.</i>
Purification:	Affinity Purified
Conjugation:	Unconjugated
Storage:	Store at -20°C as received.
Stability:	Stable for 12 months from date of receipt.
Predicted Protein Size:	36 kDa
Gene Name:	solute carrier family 25 member 22
Database Link:	<a href="#">NP_078974</a> <a href="#">Entrez Gene 79751 Human</a> <a href="#">Q9H936</a>
Background:	The SLC25 family is mitochondrial carriers that transport a variety of metabolites across the inner mitochondrial membrane. SLC25A22, also known as GC1, is 1 of the 2 mitochondrial glutamate/H <sup>+</sup> symporters, the other being SLC25A18. The SLC25 gene family encodes mitochondrial carriers that transport a variety of metabolites across the inner mitochondrial membrane (Palmieri, 2004). SLC25A22, also known as GC1, is 1 of the 2 mitochondrial glutamate/H <sup>+</sup> symporters, the other being SLC25A18 (MIM 609303). [supplied by OMIM]



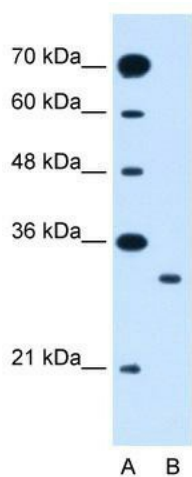
[View online »](#)

**Synonyms:** EIEE3; GC-1; GC1; NET44

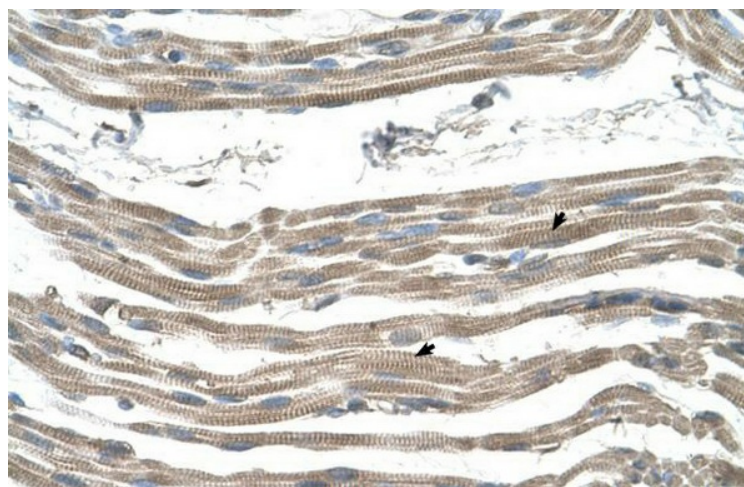
**Note:** Immunogen sequence homology: Human: 100%; Mouse: 100%; Zebrafish: 100%; Pig: 93%; Horse: 93%; Guinea pig: 92%; Rat: 86%; Bovine: 86%

**Protein Families:** Transmembrane

**Product images:**



WB Suggested Anti-SLC25A22 Antibody Titration: 1.25 ug/ml; Positive Control: Jurkat cell lysate; SLC25A22 is supported by BioGPS gene expression data to be expressed in Jurkat



Human Muscle