

## Product datasheet for **TA333670**

### SLC25A22 Rabbit Polyclonal Antibody

#### Product data:

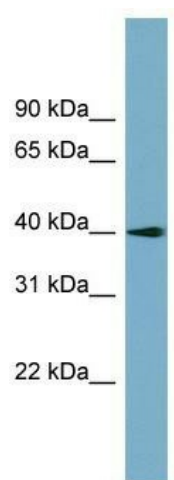
Product Type:	Primary Antibodies
Applications:	WB
Recommended Dilution:	WB
Reactivity:	Human
Host:	Rabbit
Isotype:	IgG
Clonality:	Polyclonal
Immunogen:	The immunogen for Anti-SLC25A22 Antibody: synthetic peptide directed towards the N terminal of human SLC25A22. Synthetic peptide located within the following region: VNLTLVTP EKAIKLAANDFFRHQLSKDGQKLTLLKEMLAGCGAGTCQVIV
Formulation:	Liquid. Purified antibody supplied in 1x PBS buffer with 0.09% (w/v) sodium azide and 2% sucrose. <i>Note that this product is shipped as lyophilized powder to China customers.</i>
Purification:	Affinity Purified
Conjugation:	Unconjugated
Storage:	Store at -20°C as received.
Stability:	Stable for 12 months from date of receipt.
Predicted Protein Size:	34 kDa
Gene Name:	solute carrier family 25 member 22
Database Link:	<a href="#">NP_078974</a> <a href="#">Entrez Gene 79751 Human Q9H936</a>
Background:	The SLC25 family is mitochondrial carriers that transport a variety of metabolites across the inner mitochondrial membrane. SLC25A22, also known as GC1, is 1 of the 2 mitochondrial glutamate/H <sup>+</sup> symporters, the other being SLC25A18.
Synonyms:	EIEE3; GC-1; GC1; NET44
Note:	Immunogen sequence homology: Pig: 100%; Rat: 100%; Human: 100%; Mouse: 100%; Guinea pig: 100%; Bovine: 86%; Zebrafish: 86%



[View online »](#)

Protein Families: Transmembrane

### Product images:



WB Suggested Anti-SLC25A22 Antibody Titration:  
0.2-1 ug/ml; Positive Control: Human kidney