

Product datasheet for **TA333669**

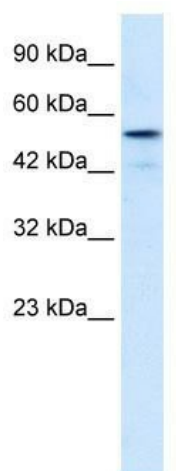
SNIP1 Rabbit Polyclonal Antibody

Product data:

Product Type:	Primary Antibodies
Applications:	WB
Recommended Dilution:	WB
Reactivity:	Human
Host:	Rabbit
Isotype:	IgG
Clonality:	Polyclonal
Immunogen:	The immunogen for Anti-SNIP1 Antibody: synthetic peptide directed towards the middle region of human SNIP1. Synthetic peptide located within the following region: RNDVGGGGSESQELVPRPGGNNKEKEVPAKEKPSFELSGALLEDNTFRG
Formulation:	Liquid. Purified antibody supplied in 1x PBS buffer with 0.09% (w/v) sodium azide and 2% sucrose. <i>Note that this product is shipped as lyophilized powder to China customers.</i>
Purification:	Affinity Purified
Conjugation:	Unconjugated
Storage:	Store at -20°C as received.
Stability:	Stable for 12 months from date of receipt.
Predicted Protein Size:	46 kDa
Gene Name:	Smad nuclear interacting protein 1
Database Link:	NP_078976 Entrez Gene 79753 Human Q8TAD8
Background:	Smad-binding peptide aptamers can be developed to selectively inhibit TGF-beta-induced gene expression.
Synonyms:	PMRED
Note:	Immunogen sequence homology: Pig: 100%; Human: 100%; Dog: 93%; Rat: 93%; Horse: 93%; Mouse: 93%; Bovine: 92%; Guinea pig: 92%; Zebrafish: 82%; Rabbit: 81%



[View online »](#)

Product images:

WB Suggested Anti-SNIP1 Antibody Titration: 0.2-1 ug/ml; Positive Control: Jurkat cell lysate. SNIP1 is supported by BioGPS gene expression data to be expressed in Jurkat.