

Product datasheet for **TA333666**

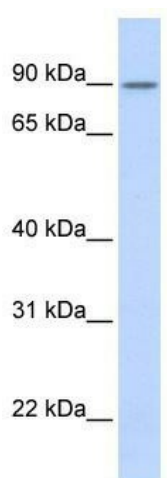
ZNF408 Rabbit Polyclonal Antibody

Product data:

Product Type:	Primary Antibodies
Applications:	WB
Recommended Dilution:	WB
Reactivity:	Human
Host:	Rabbit
Isotype:	IgG
Clonality:	Polyclonal
Immunogen:	The immunogen for Anti-ZNF408 Antibody: synthetic peptide directed towards the middle region of human ZNF408. Synthetic peptide located within the following region: ERPFPCPCGRAYTLATKLRRHLKSHLEDKPYRCPTCGMGYTLPQSLRRH
Formulation:	Liquid. Purified antibody supplied in 1x PBS buffer with 0.09% (w/v) sodium azide and 2% sucrose. <i>Note that this product is shipped as lyophilized powder to China customers.</i>
Purification:	Affinity Purified
Conjugation:	Unconjugated
Storage:	Store at -20°C as received.
Stability:	Stable for 12 months from date of receipt.
Predicted Protein Size:	78 kDa
Gene Name:	zinc finger protein 408
Database Link:	NP_079017 Entrez Gene 79797 Human Q9H9D4
Background:	The exact function of this protein remains unknown.
Synonyms:	FLJ12827
Note:	Immunogen sequence homology: Dog: 100%; Pig: 100%; Horse: 100%; Human: 100%; Bovine: 100%; Rabbit: 100%; Mouse: 93%; Zebrafish: 93%
Protein Families:	Transcription Factors



[View online »](#)

Product images:

WB Suggested Anti-ZNF408 Antibody Titration:
0.2-1 ug/ml; ELISA Titer: 1:1562500; Positive
Control: Transfected 293T