

## Product datasheet for **TA333662**

### **CBL1 Rabbit Polyclonal Antibody**

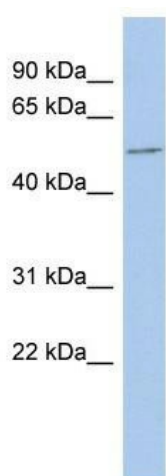
#### **Product data:**

Product Type:	Primary Antibodies
Applications:	WB
Recommended Dilution:	WB
Reactivity:	Human
Host:	Rabbit
Isotype:	IgG
Clonality:	Polyclonal
Immunogen:	The immunogen for Anti-CBL1 Antibody: synthetic peptide directed towards the N terminal of human CBL1. Synthetic peptide located within the following region: MDHTDNELQGTNSSGSLGGLDVRRRIPIKLISKQANKAKPAPRTQRTINR
Formulation:	Liquid. Purified antibody supplied in 1x PBS buffer with 0.09% (w/v) sodium azide and 2% sucrose. <i>Note that this product is shipped as lyophilized powder to China customers.</i>
Purification:	Affinity Purified
Conjugation:	Unconjugated
Storage:	Store at -20°C as received.
Stability:	Stable for 12 months from date of receipt.
Predicted Protein Size:	55 kDa
Gene Name:	Cbl proto-oncogene like 1
Database Link:	<a href="#">NP_079090</a> <a href="#">Entrez Gene 79872 Human Q75N03</a>



[View online »](#)

<b>Background:</b>	Epithelial cell cadherin is endocytosed as a consequence of tyrosine phosphorylation and ubiquitination. CBLL1 is an E3 ubiquitin ligase that mediates ubiquitination of the CDH1 complex. Epithelial cell cadherin (CDH1; MIM 192090) is endocytosed as a consequence of tyrosine phosphorylation and ubiquitination. HAKAI is an E3 ubiquitin ligase (see UBE3A; MIM 601623) that mediates ubiquitination of the CDH1 complex. Epithelial cell cadherin (CDH1; MIM 192090) is endocytosed as a consequence of tyrosine phosphorylation and ubiquitination. HAKAI is an E3 ubiquitin ligase (see UBE3A; MIM 601623) that mediates ubiquitination of the CDH1 complex. [supplied by OMIM]
<b>Synonyms:</b>	HAKAI; RNF188
<b>Note:</b>	Immunogen sequence homology: Dog: 100%; Pig: 100%; Rat: 100%; Horse: 100%; Human: 100%; Mouse: 100%; Bovine: 100%; Rabbit: 100%; Guinea pig: 100%; Zebrafish: 86%
<b>Protein Families:</b>	Druggable Genome

**Product images:**

WB Suggested Anti-CBLL1 Antibody Titration: 0.2-1 ug/ml; ELISA Titer: 1:62500; Positive Control: THP-1 cell lysate