

## Product datasheet for **TA333661**

### ZNF672 Rabbit Polyclonal Antibody

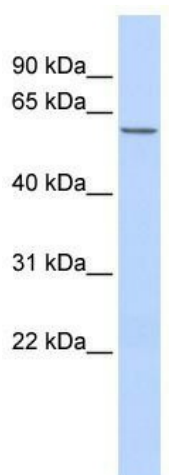
#### Product data:

|                         |   |
|-------------------------|---|
| Product Type:           | Primary Antibodies  |
| Applications:           | WB  |
| Recommended Dilution:   | WB  |
| Reactivity:             | Human   |
| Host:                   | Rabbit  |
| Isotype:                | IgG   |
| Clonality:              | Polyclonal  |
| Immunogen:              | The immunogen for Anti-ZNF672 Antibody: synthetic peptide directed towards the middle region of human ZNF672. Synthetic peptide located within the following region:<br>NHAGHKPHKCPECSKAFSVASKLALHRKTHLGERPAECAECGKCFSHRS |
| Formulation:            | Liquid. Purified antibody supplied in 1x PBS buffer with 0.09% (w/v) sodium azide and 2% sucrose.<br><i>Note that this product is shipped as lyophilized powder to China customers.</i>                                   |
| Purification:           | Affinity Purified   |
| Conjugation:            | Unconjugated  |
| Storage:                | Store at -20°C as received.   |
| Stability:              | Stable for 12 months from date of receipt.  |
| Predicted Protein Size: | 50 kDa  |
| Gene Name:              | zinc finger protein 672   |
| Database Link:          | <a href="#">NP_079112</a><br><a href="#">Entrez Gene 79894 Human</a><br><a href="#">Q499Z4</a>  |
| Background:             | ZNF672 belongs to the krueppel C2H2-type zinc-finger protein family. It contains 14 C2H2-type zinc fingers. ZNF672 may be involved in transcriptional regulation.   |
| Synonyms:               | FLJ22301  |
| Note:                   | Immunogen sequence homology: Rat: 100%; Human: 100%; Mouse: 100%; Rabbit: 100%; Dog: 93%; Pig: 93%; Bovine: 93%; Horse: 86%   |



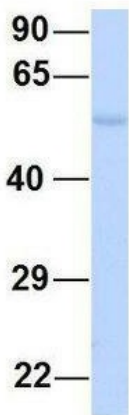
[View online »](#)

Product images:



WB Suggested Anti-ZNF672 Antibody Titration:  
0.2-1 ug/ml; ELISA Titer: 1:312500; Positive  
Control: Human heart

**ZNF672**



Rabbit Anti-ZNF672  
Sample Type: Human Fetal Lung  
Antibody Concentration: 1ug/mL

Host: Rabbit; Target Name: ZNF672; Sample  
Tissue: Human Fetal Lung; Antibody Dilution: 1.0  
ug/ml