

## Product datasheet for **TA333660**

### SLC24A6 (SLC8B1) Rabbit Polyclonal Antibody

#### Product data:

Product Type:	Primary Antibodies
Applications:	WB
Recommended Dilution:	WB
Reactivity:	Human
Host:	Rabbit
Isotype:	IgG
Clonality:	Polyclonal
Immunogen:	The immunogen for Anti-SLC24A6 Antibody: synthetic peptide directed towards the middle region of human SLC24A6. Synthetic peptide located within the following region: SIGDAFSDFTLARQGYPRMAFSACFGGIIFNILVGVGLGCLLQIRSHTE
Formulation:	Liquid. Purified antibody supplied in 1x PBS buffer with 0.09% (w/v) sodium azide and 2% sucrose. <i>Note that this product is shipped as lyophilized powder to China customers.</i>
Purification:	Affinity Purified
Conjugation:	Unconjugated
Storage:	Store at -20°C as received.
Stability:	Stable for 12 months from date of receipt.
Predicted Protein Size:	64 kDa
Gene Name:	solute carrier family 8 member B1
Database Link:	<a href="#">NP_079235</a> <a href="#">Entrez Gene 80024 Human</a> <a href="#">Q6J4K2</a>
Background:	SLC24A6 belongs to a family of potassium-dependent sodium/calcium exchangers that maintain cellular calcium homeostasis through the electrogenic countertransport of 4 sodium ions for 1 calcium ion and 1 potassium ion. SLC24A6 belongs to a family of potassium-dependent sodium/calcium exchangers that maintain cellular calcium homeostasis through the electrogenic countertransport of 4 sodium ions for 1 calcium ion and 1 potassium ion (Cai and Lytton, 2004 [PubMed 14625281]). [supplied by OMIM]



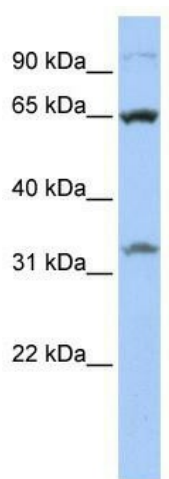
[View online »](#)

**Synonyms:** NCKX6; NCLX; SLC24A6

**Note:** Immunogen sequence homology: Dog: 100%; Pig: 100%; Rat: 100%; Horse: 100%; Human: 100%; Mouse: 100%; Bovine: 100%; Rabbit: 100%; Guinea pig: 100%

**Protein Families:** Druggable Genome, Transmembrane

**Product images:**



WB Suggested Anti-SLC24A6 Antibody Titration:  
0.2-1 ug/ml; ELISA Titer: 1:62500; Positive Control:  
721\_B cell lysate