

Product datasheet for **TA333659**

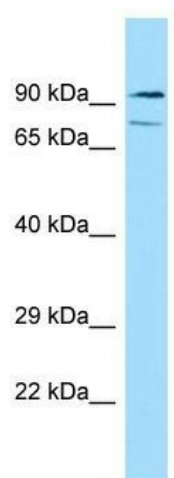
HSPA12A Rabbit Polyclonal Antibody

Product data:

Product Type:	Primary Antibodies
Applications:	WB
Recommended Dilution:	WB
Reactivity:	Human
Host:	Rabbit
Isotype:	IgG
Clonality:	Polyclonal
Immunogen:	The immunogen for Anti-HSPA12A Antibody is: synthetic peptide directed towards the N-terminal region of Human HSPA12A. Synthetic peptide located within the following region: KALEIFAYALQYFKEQALKELSDQAGSEFENSVDVRWWITVPAIWKQPAKQ
Formulation:	Liquid. Purified antibody supplied in 1x PBS buffer with 0.09% (w/v) sodium azide and 2% sucrose. <i>Note that this product is shipped as lyophilized powder to China customers.</i>
Purification:	Affinity Purified
Conjugation:	Unconjugated
Storage:	Store at -20°C as received.
Stability:	Stable for 12 months from date of receipt.
Predicted Protein Size:	74 kDa
Gene Name:	heat shock protein family A (Hsp70) member 12A
Database Link:	NP_079291 Entrez Gene 259217 Human O43301
Background:	The function of this protein remains unknown.
Synonyms:	RP11-539I5.1
Note:	Immunogen sequence homology: Dog: 100%; Pig: 100%; Goat: 100%; Human: 100%; Bovine: 100%; Rabbit: 100%; Rat: 93%; Horse: 93%; Mouse: 93%; Guinea pig: 93%; Zebrafish: 79%



[View online »](#)

Product images:

Host: Rabbit; Target Name: HSPA12A; Sample
Tissue: HT1080 Whole Cell lysates; Antibody
Dilution: 1.0 ug/ml