

Product datasheet for **TA333656**

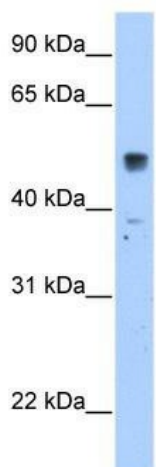
SLC35F5 Rabbit Polyclonal Antibody

Product data:

Product Type:	Primary Antibodies
Applications:	WB
Recommended Dilution:	WB
Reactivity:	Human
Host:	Rabbit
Isotype:	IgG
Clonality:	Polyclonal
Immunogen:	The immunogen for Anti-SLC35F5 Antibody: synthetic peptide directed towards the C terminal of human SLC35F5. Synthetic peptide located within the following region: VDREDKLDIPMFFGFVGLFNLLLLWPGFFLLHYTGFEDEFPNKVVLMCI
Formulation:	Liquid. Purified antibody supplied in 1x PBS buffer with 0.09% (w/v) sodium azide and 2% sucrose.
Purification:	Affinity Purified
Conjugation:	Unconjugated
Storage:	Store at -20°C as received.
Stability:	Stable for 12 months from date of receipt.
Predicted Protein Size:	59 kDa
Gene Name:	solute carrier family 35 member F5
Database Link:	NP_079457 Entrez Gene 80255 Human Q8WV83
Background:	SLC35F5 is a putative solute transporter.
Synonyms:	FLJ22004
Note:	Immunogen sequence homology: Dog: 100%; Pig: 100%; Rat: 100%; Horse: 100%; Human: 100%; Mouse: 100%; Bovine: 100%; Rabbit: 100%; Guinea pig: 100%
Protein Families:	Transmembrane



[View online »](#)

Product images:

WB Suggested Anti-SLC35F5 Antibody Titration:
2.5 ug/ml; Positive Control: Transfected 293T