

Product datasheet for **TA333654**

Necap1 Rabbit Polyclonal Antibody

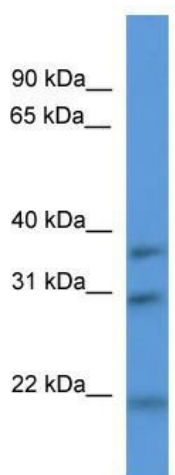
Product data:

Product Type:	Primary Antibodies
Applications:	WB
Recommended Dilution:	WB
Reactivity:	Mouse
Host:	Rabbit
Isotype:	IgG
Clonality:	Polyclonal
Immunogen:	The immunogen for Anti-Necap1 Antibody: synthetic peptide corresponding to a region of Mouse. Synthetic peptide located within the following region: RYFVIRIQDGTGRSAFIGIGFTDRGDAFDNFVSLQDHFKWVKQETEISKE
Formulation:	Liquid. Purified antibody supplied in 1x PBS buffer with 0.09% (w/v) sodium azide and 2% sucrose.
Purification:	Affinity Purified
Conjugation:	Unconjugated
Storage:	Store at -20°C as received.
Stability:	Stable for 12 months from date of receipt.
Predicted Protein Size:	30 kDa
Gene Name:	NECAP endocytosis associated 1
Database Link:	NP_080543 Entrez Gene 67602 Mouse Q9CR95
Background:	Necap1 may be involved in endocytosis.
Synonyms:	DKFZP566B183; MGC131900; NECAP-1
Note:	Immunogen sequence homology: Dog: 100%; Pig: 100%; Rat: 100%; Horse: 100%; Human: 100%; Mouse: 100%; Bovine: 100%; Rabbit: 100%; Guinea pig: 100%; Zebrafish: 79%



[View online »](#)

Product images:



WB Suggested Anti-Necap1 Antibody Titration:
0.2-1 ug/ml; ELISA Titer: 1: 312500; Positive
Control: Mouse Spleen