

## Product datasheet for **TA333653**

### Ndutfaf5 Rabbit Polyclonal Antibody

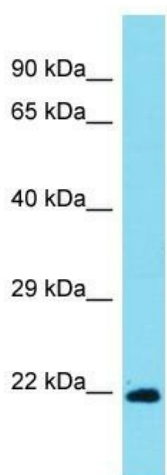
#### Product data:

Product Type:	Primary Antibodies
Applications:	WB
Recommended Dilution:	WB
Reactivity:	Mouse
Host:	Rabbit
Isotype:	IgG
Clonality:	Polyclonal
Immunogen:	The immunogen for Anti-Ndutfaf5 Antibody is: synthetic peptide directed towards the middle region of Mouse Ndutfaf5. Synthetic peptide located within the following region: DTMLAAAVYREMYRNEDGSIPATFQIYHMGWKYHDSQARPAERGSAT
Formulation:	Liquid. Purified antibody supplied in 1x PBS buffer with 0.09% (w/v) sodium azide and 2% sucrose. <i>Note that this product is shipped as lyophilized powder to China customers.</i>
Purification:	Affinity Purified
Conjugation:	Unconjugated
Storage:	Store at -20°C as received.
Stability:	Stable for 12 months from date of receipt.
Predicted Protein Size:	17 kDa
Gene Name:	NADH dehydrogenase (ubiquinone) complex I, assembly factor 5
Database Link:	<a href="#">NP_081369</a> <a href="#">Entrez Gene 69487 Mouse</a> <a href="#">A2APY7</a>
Background:	Ndutfaf5 is involved in the assembly of mitochondrial NADH:ubiquinone oxidoreductase complex (complex I, MT-ND1) at early stages. It may have methyltransferase activity.
Synonyms:	2310003L22Rik; RGD1309829; RP23-139H14.1
Note:	Immunogen sequence homology: Dog: 100%; Pig: 100%; Horse: 100%; Human: 100%; Bovine: 100%; Rat: 93%; Mouse: 93%; Rabbit: 93%; Guinea pig: 93%; Zebrafish: 92%



[View online »](#)

## Product images:



Host: Rabbit

Target Name: Ndufaf5

Sample Tissue: Mouse Thymus Lysate

Antibody Dilution: 1.0 µg/ml

Host: Rabbit; Target Name: Ndufaf5; Sample  
Tissue: Mouse Thymus lysates; Antibody Dilution:  
1.0 ug/ml