

Product datasheet for **TA333651**

Traf3ip1 Rabbit Polyclonal Antibody

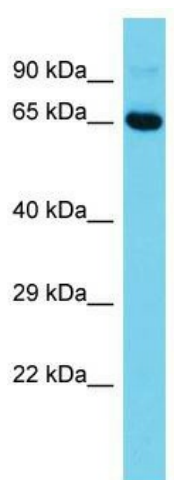
Product data:

Product Type:	Primary Antibodies
Applications:	WB
Recommended Dilution:	WB
Reactivity:	Mouse
Host:	Rabbit
Isotype:	IgG
Clonality:	Polyclonal
Immunogen:	The immunogen for Anti-Traf3ip1 Antibody is: synthetic peptide directed towards the N-terminal region of Mouse Traf3ip1. Synthetic peptide located within the following region: VIRITGFMKGLYTD AEMKSENVKDKDAKISFLQKAIDVMMVSGEPLAAK
Formulation:	Liquid. Purified antibody supplied in 1x PBS buffer with 0.09% (w/v) sodium azide and 2% sucrose. <i>Note that this product is shipped as lyophilized powder to China customers.</i>
Purification:	Affinity Purified
Conjugation:	Unconjugated
Storage:	Store at -20°C as received.
Stability:	Stable for 12 months from date of receipt.
Predicted Protein Size:	69 kDa
Gene Name:	TRAF3 interacting protein 1
Database Link:	NP_082994 Entrez Gene 74019 Mouse Q149C2
Background:	Traf3ip1 play an inhibitory role on IL13 signaling by binding to IL13RA1. It is involved in suppression of IL13-induced STAT6 phosphorylation, transcriptional activity and DNA-binding. It recruits TRAF3 and DISC1 to the microtubules.
Synonyms:	DKFZp434F124; MIP-T3; MIPT3
Note:	Immunogen sequence homology: Dog: 100%; Pig: 100%; Rat: 100%; Horse: 100%; Human: 100%; Mouse: 100%; Bovine: 100%; Guinea pig: 100%; Zebrafish: 86%



[View online »](#)

Product images:



Host: Rabbit; Target Name: Traf3ip1; Sample
Tissue: Mouse Testis lysates; Antibody Dilution:
1.0 ug/ml