

Product datasheet for **TA333649**

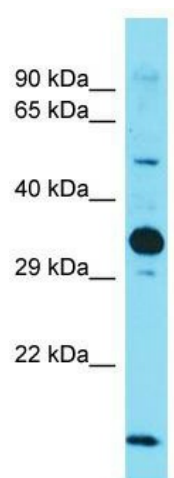
Nus1 Rabbit Polyclonal Antibody

Product data:

Product Type:	Primary Antibodies
Applications:	WB
Recommended Dilution:	WB
Reactivity:	Mouse
Host:	Rabbit
Isotype:	IgG
Clonality:	Polyclonal
Immunogen:	The immunogen for Anti-Nus1 Antibody is: synthetic peptide directed towards the middle region of Mouse Nus1. Synthetic peptide located within the following region: RLMDEILKQQQELLGQDCSKYSAEFANSNDKDDQDLNCPSAVKVLSPEDG
Formulation:	Liquid. Purified antibody supplied in 1x PBS buffer with 0.09% (w/v) sodium azide and 2% sucrose. <i>Note that this product is shipped as lyophilized powder to China customers.</i>
Purification:	Affinity Purified
Conjugation:	Unconjugated
Storage:	Store at -20°C as received.
Stability:	Stable for 12 months from date of receipt.
Predicted Protein Size:	33 kDa
Gene Name:	NUS1 dehydrodolichyl diphosphate synthase subunit
Database Link:	NP_084526 Entrez Gene 52014 Mouse Q99LJ8
Background:	Nus1 acts as a specific receptor for the N-terminus of Nogo-B, a neural and cardiovascular regulator. It regulates the stability of nascent NPC2, thereby promoting trafficking of LDL-derived cholesterol.
Synonyms:	C6orf68; MGC7199; MGC117249; MGC:7199; NgBR
Note:	Immunogen sequence homology: Dog: 100%; Horse: 100%; Human: 100%; Bovine: 100%; Pig: 93%; Rat: 93%; Rabbit: 93%; Mouse: 92%; Guinea pig: 86%



[View online »](#)

Product images:

Host: Rabbit; Target Name: Nus1; Sample Tissue: Mouse Heart lysates; Antibody Dilution: 1.0 ug/ml