

Product datasheet for **TA333648**

SLC25A21 Rabbit Polyclonal Antibody

Product data:

Product Type:	Primary Antibodies
Applications:	WB
Recommended Dilution:	WB
Reactivity:	Human
Host:	Rabbit
Isotype:	IgG
Clonality:	Polyclonal
Immunogen:	The immunogen for Anti-SLC25A21 Antibody: synthetic peptide directed towards the middle region of human SLC25A21. Synthetic peptide located within the following region: LLSGTIASVINIPFDVAKSRIQGPQVPGEIKYRTCCKTMTATVYQEEGIL
Formulation:	Liquid. Purified antibody supplied in 1x PBS buffer with 0.09% (w/v) sodium azide and 2% sucrose. <i>Note that this product is shipped as lyophilized powder to China customers.</i>
Purification:	Affinity Purified
Conjugation:	Unconjugated
Storage:	Store at -20°C as received.
Stability:	Stable for 12 months from date of receipt.
Predicted Protein Size:	33 kDa
Gene Name:	solute carrier family 25 member 21
Database Link:	NP_085134 Entrez Gene 89874 Human Q9BQT8



[View online »](#)

Background:

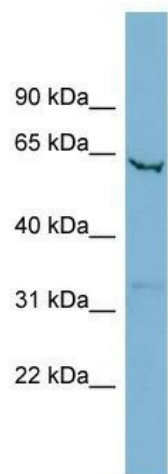
SLC25A21 is a homolog of the *S. cerevisiae* ODC proteins, mitochondrial carriers that transport C5-C7 oxodicarboxylates across inner mitochondrial membranes. One of the species transported by ODC is 2-oxoadipate, a common intermediate in the catabolism of lysine, tryptophan, and hydroxylysine in mammals. Within mitochondria, 2-oxoadipate is converted into acetyl-CoA. [supplied by OMIM, Apr 2004]. Transcript Variant: This variant (2) has a split 3' exon, as compared to variant 1. The resulting isoform (2) lacks the last aa, as compared to isoform 1. Sequence Note: This RefSeq record was created from transcript and genomic sequence data to make the sequence consistent with the reference genome assembly. The genomic coordinates used for the transcript record were based on transcript alignments. ##Evidence-Data-START## Transcript exon combination :: AK289575.1 [ECO:0000332] ##Evidence-Data-END## ##RefSeq-Attributes-START## gene product(s) localized to mito. :: reported by MitoCarta ##RefSeq-Attributes-END##

Synonyms:

ODC; ODC1

Note:

Immunogen sequence homology: Pig: 100%; Rat: 100%; Horse: 100%; Human: 100%; Mouse: 100%; Bovine: 100%; Rabbit: 100%; Zebrafish: 100%; Guinea pig: 100%; Dog: 93%

Product images:

WB Suggested Anti-SLC25A21 Antibody Titration:
0.2-1 ug/ml; Positive Control: HT1080 cell lysate