

Product datasheet for **TA333646**

TCF7L2 Rabbit Polyclonal Antibody

Product data:

Product Type:	Primary Antibodies
Applications:	WB
Recommended Dilution:	WB
Reactivity:	Human
Host:	Rabbit
Isotype:	IgG
Clonality:	Polyclonal
Immunogen:	The immunogen for Anti-TCF7L2 Antibody: synthetic peptide directed towards the middle region of human TCF7L2. Synthetic peptide located within the following region: GGFRHPYPTALTVDNASMSRFPPHMVPPHHTLHTTGIPHPAIVTPTVKQES
Formulation:	Liquid. Purified antibody supplied in 1x PBS buffer with 0.09% (w/v) sodium azide and 2% sucrose. <i>Note that this product is shipped as lyophilized powder to China customers.</i>
Purification:	Affinity Purified
Conjugation:	Unconjugated
Storage:	Store at -20°C as received.
Stability:	Stable for 12 months from date of receipt.
Predicted Protein Size:	65 kDa
Gene Name:	transcription factor 7 like 2
Database Link:	NP_110383 Entrez Gene 6934 Human Q9NQB0



[View online »](#)

Background:

The TCF7L2 is a high mobility group (HMG) box-containing transcription factor implicated in blood glucose homeostasis. The study of Yi et al. suggested that TCF7L2 acts through regulation of proglucagon through repression of the proglucagon gene in enteroendocrine cells via the Wnt signaling pathway. The TCF7L2 gene product is a high mobility group (HMG) box-containing transcription factor implicated in blood glucose homeostasis. The study of Yi et al. (2005) [PubMed 15525634] suggested that TCF7L2 acts through regulation of proglucagon (MIM 138030) through repression of the proglucagon gene in enteroendocrine cells via the Wnt signaling pathway. [supplied by OMIM]. Sequence Note: This gene (TCF7L2, alias TCF-4) is distinct from TCF4. Publication Note: This RefSeq record includes a subset of the publications that are available for this gene. Please see the Entrez Gene record to access additional publications. PRIMARYREFSEQ_SPAN PRIMARY_IDENTIFIER PRIMARY_SPAN COMP 1-202 DA473655.1 1-202 203-251 Y11306.2 3-51 252-1252 AK225809.1 256-1256 1253-1305 Y11306.2 1053-1105 1306-1756 AK225809.1 1310-1760 1757-1811 Y11306.2 1557-1611 1812-2652 AK225809.1 1765-2605

Synonyms:

TCF-4; TCF4

Note:

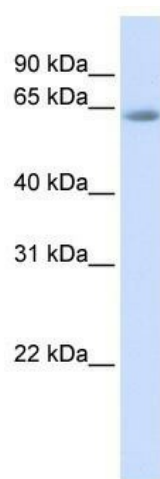
Immunogen sequence homology: Dog: 92%; Pig: 92%; Rat: 92%; Horse: 92%; Human: 92%; Mouse: 92%; Bovine: 92%; Rabbit: 92%; Zebrafish: 92%; Guinea pig: 92%

Protein Families:

Druggable Genome, Transcription Factors

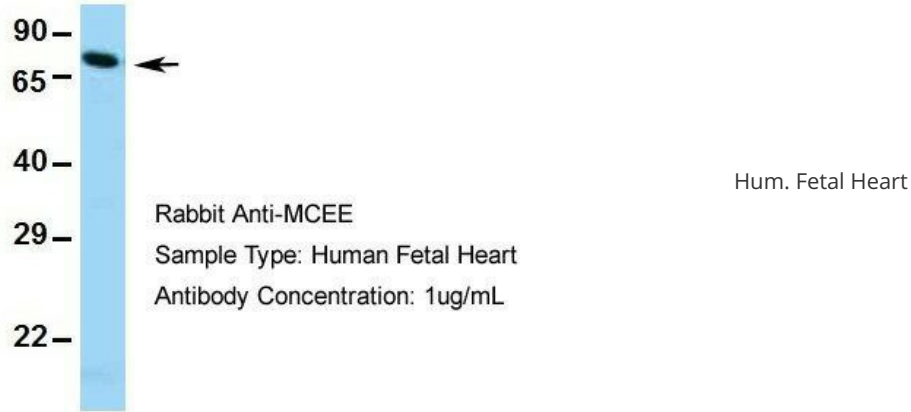
Protein Pathways:

Acute myeloid leukemia, Adherens junction, Arrhythmogenic right ventricular cardiomyopathy (ARVC), Basal cell carcinoma, Colorectal cancer, Endometrial cancer, Melanogenesis, Pathways in cancer, Prostate cancer, Thyroid cancer, Wnt signaling pathway

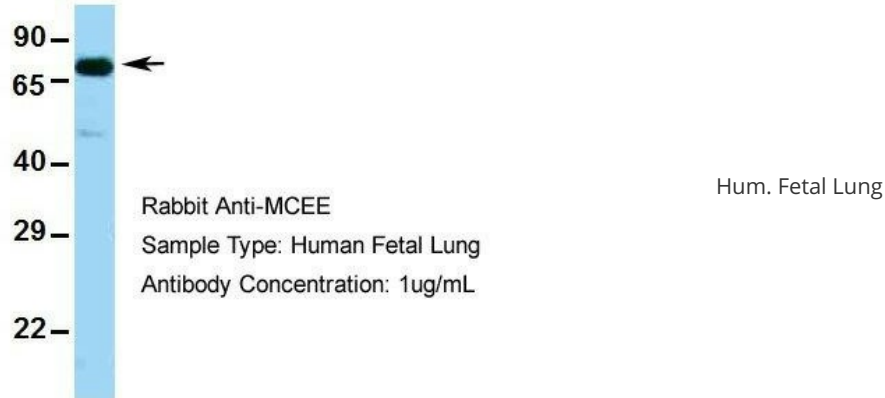
Product images:

WB Suggested Anti-TCF7L2 Antibody Titration:
0.2-1 ug/ml; ELISA Titer: 1:2500; Positive Control:
Human Muscle

TCF7L2



TCF7L2



TCF7L2

