

Product datasheet for **TA333644**

SHARP1 (BHLHE41) Rabbit Polyclonal Antibody

Product data:

Product Type:	Primary Antibodies
Applications:	WB
Recommended Dilution:	WB
Reactivity:	Human
Host:	Rabbit
Isotype:	IgG
Clonality:	Polyclonal
Immunogen:	The immunogen for Anti-BHLHB3 Antibody: synthetic peptide directed towards the middle region of human BHLHB3. Synthetic peptide located within the following region: YCVPIQRTQPSAELAAENDTDTDSGYGGAEARPDREKKGAGASRVTI
Formulation:	Liquid. Purified antibody supplied in 1x PBS buffer with 0.09% (w/v) sodium azide and 2% sucrose. <i>Note that this product is shipped as lyophilized powder to China customers.</i>
Purification:	Affinity Purified
Conjugation:	Unconjugated
Storage:	Store at -20°C as received.
Stability:	Stable for 12 months from date of receipt.
Predicted Protein Size:	50 kDa
Gene Name:	basic helix-loop-helix family member e41
Database Link:	NP_110389 Entrez Gene 79365 Human Q9C0J9
Background:	BHLHB3 may be a transcriptional repressor that represses both basal and activated transcription. It play a role as a tumor suppressor for lung cancer. DEC1 and DEC2(BHLHB3) may play a crucial role in the adaptation to hypoxia and are regulators of the mammalian molecular clock, and form a fifth clock-gene family.
Synonyms:	BHLHB3; DEC2; hDEC2; SHARP1
Note:	Immunogen sequence homology: Dog: 100%; Pig: 100%; Human: 100%; Bovine: 87%

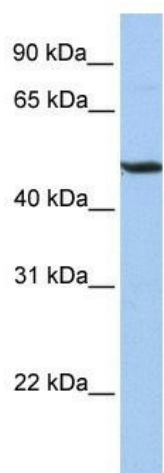


[View online »](#)

Protein Families: Transcription Factors

Protein Pathways: Circadian rhythm - mammal

Product images:



WB Suggested Anti-BHLHB3 Antibody Titration:
0.2-1 ug/ml; ELISA Titer: 1:312500; Positive
Control: HepG2 cell lysate