

Product datasheet for **TA333643**

SLC2A10 Rabbit Polyclonal Antibody

Product data:

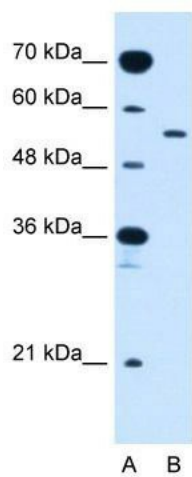
Product Type:	Primary Antibodies
Applications:	WB
Recommended Dilution:	WB
Reactivity:	Human
Host:	Rabbit
Isotype:	IgG
Clonality:	Polyclonal
Immunogen:	The immunogen for Anti-SLC2A10 Antibody: synthetic peptide directed towards the middle region of human SLC2A10. Synthetic peptide located within the following region: AKKTKPHPRSGDPSAPPRLALSSALPGPPLPARGHALLRWTALLCLMVFV
Formulation:	Liquid. Purified antibody supplied in 1x PBS buffer with 0.09% (w/v) sodium azide and 2% sucrose. <i>Note that this product is shipped as lyophilized powder to China customers.</i>
Purification:	Affinity Purified
Conjugation:	Unconjugated
Storage:	Store at -20°C as received.
Stability:	Stable for 12 months from date of receipt.
Predicted Protein Size:	60 kDa
Gene Name:	solute carrier family 2 member 10
Database Link:	NP_110404 Entrez Gene 81031 Human O95528
Background:	SLC2A10 is a member of the facilitative glucose transporter family, which plays a significant role in maintaining glucose homeostasis.SLC2A10 is a member of the facilitative glucose transporter family, which plays a significant role in maintaining glucose homeostasis. [supplied by OMIM]
Synonyms:	ATS; GLUT10
Note:	Immunogen sequence homology: Human: 100%



[View online »](#)

Protein Families: Transmembrane

Product images:



WB Suggested Anti-SLC2A10 Antibody Titration:
2.5 ug/ml; Positive Control: Jurkat cell lysate