

## Product datasheet for **TA333642**

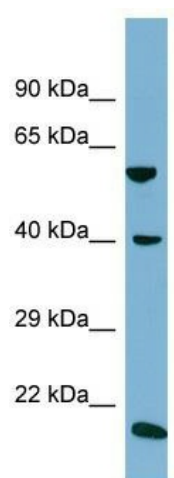
### SLC2A10 Rabbit Polyclonal Antibody

#### Product data:

Product Type:	Primary Antibodies
Applications:	WB
Recommended Dilution:	WB
Reactivity:	Human
Host:	Rabbit
Isotype:	IgG
Clonality:	Polyclonal
Immunogen:	The immunogen for Anti-SLC2A10 Antibody is: synthetic peptide directed towards the C-terminal region of Human SLC2A10. Synthetic peptide located within the following region: GDSGLLQDSSLPIIPRTNEDQREPILSTAKKTKPHPRSGDPSAPPRLALS
Formulation:	Liquid. Purified antibody supplied in 1x PBS buffer with 0.09% (w/v) sodium azide and 2% sucrose. <i>Note that this product is shipped as lyophilized powder to China customers.</i>
Purification:	Affinity Purified
Conjugation:	Unconjugated
Storage:	Store at -20°C as received.
Stability:	Stable for 12 months from date of receipt.
Predicted Protein Size:	57 kDa
Gene Name:	solute carrier family 2 member 10
Database Link:	<a href="#">NP_110404</a> <a href="#">Entrez Gene 81031 Human O95528</a>
Background:	SLC2A10 is a member of the facilitative glucose transporter family, which plays a significant role in maintaining glucose homeostasis.
Synonyms:	ATS; GLUT10
Note:	Immunogen sequence homology: Human: 100%
Protein Families:	Transmembrane



[View online »](#)

**Product images:**

Host: Rabbit; Target Name: SLC2A10; Sample  
Tissue: NCI-H226 Whole Cell lysates; Antibody  
Dilution: 1.0 ug/ml