

Product datasheet for TA333641

SLC25A32 Rabbit Polyclonal Antibody

Product data:

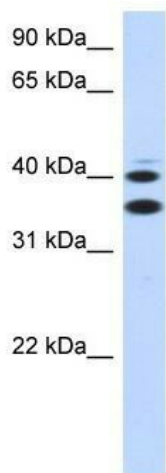
Product Type:	Primary Antibodies
Applications:	WB
Recommended Dilution:	WB
Reactivity:	Human
Host:	Rabbit
Isotype:	IgG
Clonality:	Polyclonal
Immunogen:	The immunogen for Anti-SLC25A32 Antibody: synthetic peptide directed towards the middle region of human SLC25A32. Synthetic peptide located within the following region: NRLPEAQLSTVEYISVAALSKIFAVAATYPYQVVRARLQDQHMFYSGVID
Formulation:	Liquid. Purified antibody supplied in 1x PBS buffer with 0.09% (w/v) sodium azide and 2% sucrose.
Purification:	Affinity Purified
Conjugation:	Unconjugated
Storage:	Store at -20°C as received.
Stability:	Stable for 12 months from date of receipt.
Predicted Protein Size:	35 kDa
Gene Name:	solute carrier family 25 member 32
Database Link:	NP_110407 Entrez Gene 81034 Human Q9H2D1
Background:	SLC25A32 transports folate across the inner membranes of mitochondria. Folate metabolism is distributed between the cytosolic and mitochondrial compartments. SLC25A32 is a transporter that shuttles folates from the cytoplasm into mitochondria (Titus and Moran, 2000 [PubMed 10978331]). [supplied by OMIM]
Synonyms:	MFT; MFTC; RREI


[View online »](#)

Note: Immunogen sequence homology: Dog: 100%; Pig: 100%; Rat: 100%; Horse: 100%; Human: 100%; Mouse: 100%; Yeast: 100%; Rabbit: 100%; Zebrafish: 100%; Guinea pig: 100%; Bovine: 93%

Protein Families: Druggable Genome

Product images:



WB Suggested Anti-SLC25A32 Antibody Titration:
0.2-1 ug/ml; ELISA Titer: 1:1562500; Positive
Control: Transfected 293T