

## Product datasheet for **TA333640**

### SLC25A32 Rabbit Polyclonal Antibody

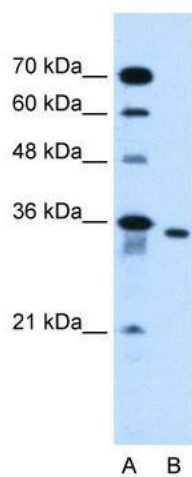
#### Product data:

Product Type:	Primary Antibodies
Applications:	WB
Recommended Dilution:	WB
Reactivity:	Human
Host:	Rabbit
Isotype:	IgG
Clonality:	Polyclonal
Immunogen:	The immunogen for Anti-SLC25A32 Antibody: synthetic peptide directed towards the N terminal of human SLC25A32. Synthetic peptide located within the following region: VRYENLIAGVSGGVLSNLALHPLDLVKIRFAVSDGLELRPKYNGILHCLT
Formulation:	Liquid. Purified antibody supplied in 1x PBS buffer with 0.09% (w/v) sodium azide and 2% sucrose. <i>Note that this product is shipped as lyophilized powder to China customers.</i>
Purification:	Affinity Purified
Conjugation:	Unconjugated
Storage:	Store at -20°C as received.
Stability:	Stable for 12 months from date of receipt.
Predicted Protein Size:	35 kDa
Gene Name:	solute carrier family 25 member 32
Database Link:	<a href="#">NP_110407</a> <a href="#">Entrez Gene 81034 Human</a> <a href="#">Q9H2D1</a>
Background:	SLC25A32 transports folate across the inner membranes of mitochondria.
Synonyms:	MFT; MFTC; RREI
Note:	Immunogen sequence homology: Dog: 100%; Pig: 100%; Rat: 100%; Horse: 100%; Human: 100%; Mouse: 100%; Bovine: 100%; Rabbit: 100%; Guinea pig: 100%; Zebrafish: 93%
Protein Families:	Druggable Genome



[View online »](#)

## Product images:



WB Suggested Anti-SLC25A32 Antibody Titration:  
0.2-1 ug/ml; Positive Control: HepG2 cell lysate