

## Product datasheet for **TA333639**

### PHACTR1 Rabbit Polyclonal Antibody

#### Product data:

Product Type:	Primary Antibodies
Applications:	IHC, WB
Recommended Dilution:	WB, IHC
Reactivity:	Human
Host:	Rabbit
Isotype:	IgG
Clonality:	Polyclonal
Immunogen:	The immunogen for Anti-PHACTR1 Antibody: synthetic peptide directed towards the middle region of human PHACTR1. Synthetic peptide located within the following region: QRPTAELEQRNILKPRNEQEEQEEKREIKRRLTRKLSQRPTVEELRERK
Formulation:	Liquid. Purified antibody supplied in 1x PBS buffer with 0.09% (w/v) sodium azide and 2% sucrose.
Purification:	Affinity Purified
Conjugation:	Unconjugated
Storage:	Store at -20°C as received.
Stability:	Stable for 12 months from date of receipt.
Predicted Protein Size:	66 kDa
Gene Name:	phosphatase and actin regulator 1
Database Link:	<a href="#">NP_112210</a> <a href="#">Entrez Gene 221692 Human</a> <a href="#">Q9C0D0</a>
Background:	PHACTR1 belongs to the phosphatase and actin regulator family. It contains 4 RPEL repeats. The function of the PHACTR1 protein remains unknown.
Synonyms:	dj257A7.2; RPEL; RPEL1
Note:	Immunogen sequence homology: Dog: 100%; Pig: 100%; Rat: 100%; Horse: 100%; Human: 100%; Mouse: 100%; Bovine: 100%; Rabbit: 100%; Guinea pig: 100%; Zebrafish: 93%; Yeast: 90%

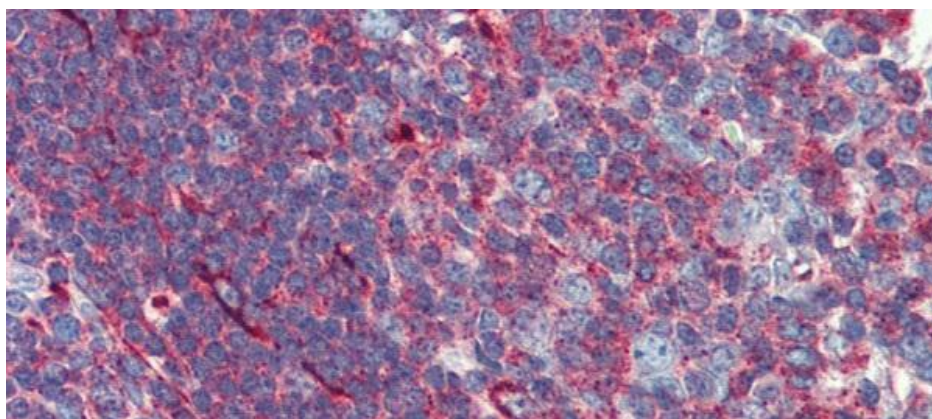


[View online »](#)

## Product images:



WB Suggested Anti-PHACTR1 Antibody Titration:  
0.2-1 ug/ml; ELISA Titer: 1: 62500; Positive  
Control: Jurkat cell lysate



Immunohistochemistry with Human Tonsil lysate  
tissue at an antibody concentration of 5.0 ug/ml  
using anti-PHACTR1 antibody