

Product datasheet for **TA333638**

SLCO5A1 Rabbit Polyclonal Antibody

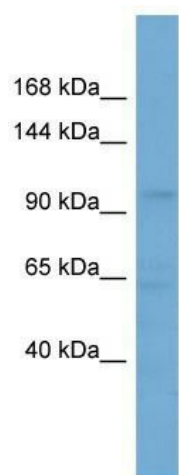
Product data:

Product Type:	Primary Antibodies
Applications:	WB
Recommended Dilution:	WB
Reactivity:	Human
Host:	Rabbit
Isotype:	IgG
Clonality:	Polyclonal
Immunogen:	The immunogen for Anti-SLCO5A1 Antibody: synthetic peptide directed towards the middle region of human SLCO5A1. Synthetic peptide located within the following region: NMTFLFVLSYTAESAIVTAFITFIPKFIESQFGIPASNASIYTGVIIVP
Formulation:	Liquid. Purified antibody supplied in 1x PBS buffer with 0.09% (w/v) sodium azide and 2% sucrose.
Purification:	Affinity Purified
Conjugation:	Unconjugated
Storage:	Store at -20°C as received.
Stability:	Stable for 12 months from date of receipt.
Predicted Protein Size:	92 kDa
Gene Name:	solute carrier organic anion transporter family member 5A1
Database Link:	NP_112220 Entrez Gene 81796 Human Q9H2Y9
Background:	This gene encodes a 12 transmembrane domain protein that is a member of the solute carrier organic anion transporter superfamily. Alternative splicing results in multiple transcript variants.
Synonyms:	OATP-J; OATP-RP4; OATP5A1; OATPJ; OATPRP4; SLC21A15
Note:	Immunogen sequence homology: Dog: 100%; Pig: 100%; Rat: 100%; Horse: 100%; Human: 100%; Mouse: 100%; Bovine: 100%; Rabbit: 100%; Zebrafish: 100%


[View online »](#)

Protein Families: Transmembrane

Product images:



WB Suggested Anti-SLCO5A1 Antibody Titration:
0.2-1 ug/ml; ELISA Titer: 1:312500; Positive
Control: HepG2 cell lysate