

Product datasheet for **TA333637**

SLC25A28 Rabbit Polyclonal Antibody

Product data:

Product Type:	Primary Antibodies
Applications:	IHC, WB
Recommended Dilution:	WB, IHC
Reactivity:	Human
Host:	Rabbit
Isotype:	IgG
Clonality:	Polyclonal
Immunogen:	The immunogen for Anti-SLC25A28 Antibody: synthetic peptide directed towards the C terminal of human SLC25A28. Synthetic peptide located within the following region: NTQESLALNSHITGHITGMASAFRTVYQVGGVTAYFRGVQARVIYQIPST
Formulation:	Liquid. Purified antibody supplied in 1x PBS buffer with 0.09% (w/v) sodium azide and 2% sucrose. <i>Note that this product is shipped as lyophilized powder to China customers.</i>
Purification:	Affinity Purified
Conjugation:	Unconjugated
Storage:	Store at -20°C as received.
Stability:	Stable for 12 months from date of receipt.
Predicted Protein Size:	39 kDa
Gene Name:	solute carrier family 25 member 28
Database Link:	NP_112489 Entrez Gene 81894 Human Q96A46
Background:	SLC25A28 is a mitochondrial iron transporter that mediates iron uptake. It is probably required for heme synthesis of hemoproteins and Fe-S cluster assembly in non-erythroid cells. The iron delivered into the mitochondria, presumably as Fe(2+), is then probably delivered to ferrochelatase to catalyze Fe(2+) incorporation into protoporphyrin IX to make heme.
Synonyms:	4; MFRN2; MRS3; MRS4L; NPD016



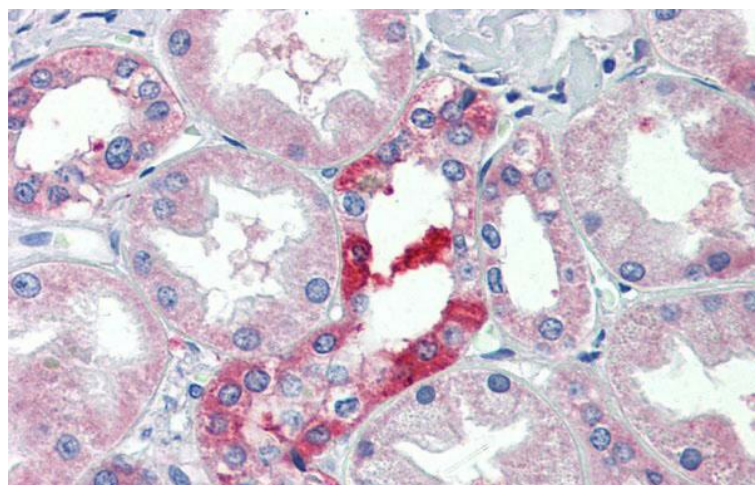
[View online »](#)

Note: Immunogen sequence homology: Human: 100%; Dog: 93%; Pig: 93%; Rat: 93%; Horse: 93%; Mouse: 93%; Rabbit: 93%; Guinea pig: 93%; Bovine: 86%

Product images:



WB Suggested Anti-SLC25A28 Antibody Titration:
1 ug/ml; Positive Control: MCF-7 whole cell lysates



Immunohistochemistry with Human kidney lysate tissue at an antibody concentration of 5.0 ug/ml using anti-SLC25A28 antibody