

Product datasheet for **TA333636**

SLC25A28 Rabbit Polyclonal Antibody

Product data:

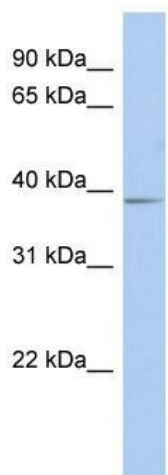
Product Type:	Primary Antibodies
Applications:	WB
Recommended Dilution:	WB
Reactivity:	Human
Host:	Rabbit
Isotype:	IgG
Clonality:	Polyclonal
Immunogen:	The immunogen for Anti-SLC25A28 Antibody: synthetic peptide directed towards the middle region of human SLC25A28. Synthetic peptide located within the following region: VWQNEGAGAFYRSYTTQLTMNVFPQAIHFMTYEFLQEHFNPQRRYNPSSH
Formulation:	Liquid. Purified antibody supplied in 1x PBS buffer with 0.09% (w/v) sodium azide and 2% sucrose.
Purification:	Affinity Purified
Conjugation:	Unconjugated
Storage:	Store at -20°C as received.
Stability:	Stable for 12 months from date of receipt.
Predicted Protein Size:	39 kDa
Gene Name:	solute carrier family 25 member 28
Database Link:	NP_112489 Entrez Gene 81894 Human Q96A46
Background:	SLC25A28 is a mitochondrial iron transporter that mediates iron uptake. It is probably required for heme synthesis of hemoproteins and Fe-S cluster assembly in non-erythroid cells. The iron delivered into the mitochondria, presumably as Fe(2+), is then probably delivered to ferrochelatase to catalyze Fe(2+) incorporation into protoporphyrin IX to make heme.
Synonyms:	4; MFRN2; MRS3; MRS4L; NPD016



[View online »](#)

Note: Immunogen sequence homology: Dog: 100%; Pig: 100%; Rat: 100%; Horse: 100%; Human: 100%; Mouse: 100%; Bovine: 100%; Rabbit: 100%; Guinea pig: 100%; Zebrafish: 79%

Product images:



WB Suggested Anti-SLC25A28 Antibody Titration:
0.2-1 ug/ml; ELISA Titer: 1:1562500; Positive
Control: Human Stomach