

Product datasheet for **TA333635**

MRPS15 Rabbit Polyclonal Antibody

Product data:

Product Type:	Primary Antibodies
Applications:	IHC, WB
Recommended Dilution:	WB, IHC
Reactivity:	Human
Host:	Rabbit
Isotype:	IgG
Clonality:	Polyclonal
Immunogen:	The immunogen for Anti-MRPS15 Antibody: synthetic peptide directed towards the N terminal of human MRPS15. Synthetic peptide located within the following region: RGYVVRKPAQSRLDDDDPPPSTLLKDYQNVPGIEKVDDVVKRLLSLEMANK
Formulation:	Liquid. Purified antibody supplied in 1x PBS buffer with 0.09% (w/v) sodium azide and 2% sucrose.
Purification:	Affinity Purified
Conjugation:	Unconjugated
Storage:	Store at -20°C as received.
Stability:	Stable for 12 months from date of receipt.
Predicted Protein Size:	30 kDa
Gene Name:	mitochondrial ribosomal protein S15
Database Link:	NP_112570 Entrez Gene 64960 Human P82914



[View online »](#)

Background:

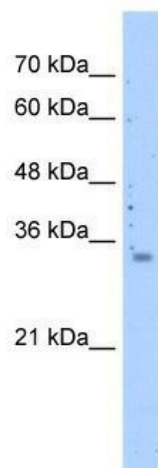
Mammalian mitochondrial ribosomal proteins are encoded by nuclear genes and help in protein synthesis within the mitochondrion. Mitochondrial ribosomes (mitoribosomes) consist of a small 28S subunit and a large 39S subunit. MRPS15 is a 28S subunit protein that belongs to the ribosomal protein S15P family. Mammalian mitochondrial ribosomal proteins are encoded by nuclear genes and help in protein synthesis within the mitochondrion. Mitochondrial ribosomes (mitoribosomes) consist of a small 28S subunit and a large 39S subunit. They have an estimated 75% protein to rRNA composition compared to prokaryotic ribosomes, where this ratio is reversed. Another difference between mammalian mitoribosomes and prokaryotic ribosomes is that the latter contain a 5S rRNA. Among different species, the proteins comprising the mitoribosome differ greatly in sequence, and sometimes in biochemical properties, which prevents easy recognition by sequence homology. This gene encodes a 28S subunit protein that belongs to the ribosomal protein S15P family. The encoded protein is more than two times the size of its E. coli counterpart, with the 12S rRNA binding sites conserved. Between human and mouse, the encoded protein is the least conserved among small subunit ribosomal proteins. Pseudogenes corresponding to this gene are found on chromosomes 15q and 19q.

Synonyms:

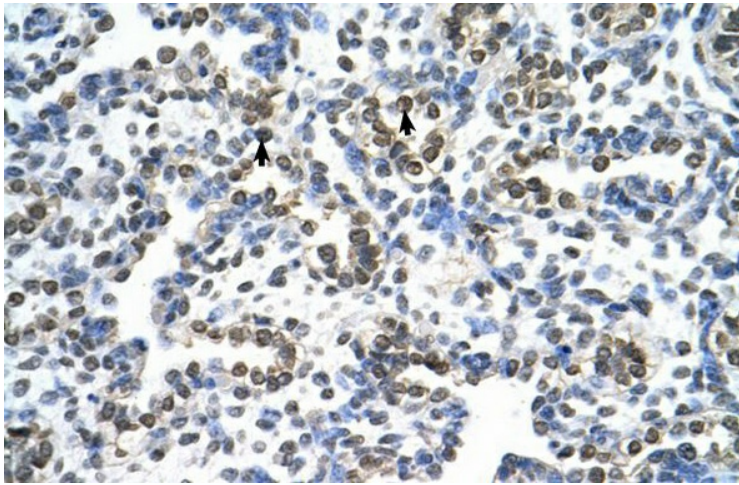
DC37; MPR-S15; RPMS15; S15mt

Note:

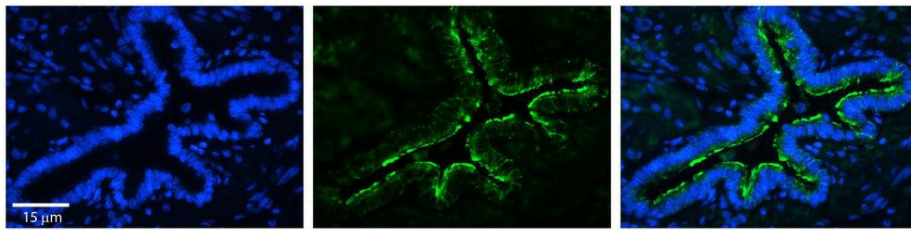
Immunogen sequence homology: Pig: 100%; Human: 100%; Bovine: 100%; Guinea pig: 100%; Horse: 93%; Dog: 92%; Rat: 92%; Rabbit: 86%; Mouse: 83%

Product images:

WB Suggested Anti-MRPS15 Antibody Titration:
0.2-1 ug/ml; ELISA Titer: 1:12500; Positive Control:
721_B cell lysate MRPS15 is supported by BioGPS
gene expression data to be expressed in 721_B



Human Lung



Rabbit Anti-MRPS15 Antibody; Formalin Fixed Paraffin Embedded Tissue: Human Bronchial Epithelial Tissue; Observed Staining: Plasma Membrane; Primary Antibody Concentration: 1:100; Secondary Antibody: Donkey anti-Rabbit-Cy3; Secondary Antibody Concentrati