

Product datasheet for **TA333633**

GABARAPL1 Rabbit Polyclonal Antibody

Product data:

Product Type:	Primary Antibodies
Applications:	IHC, WB
Recommended Dilution:	WB, IHC
Reactivity:	Human
Host:	Rabbit
Isotype:	IgG
Clonality:	Polyclonal
Immunogen:	The immunogen for Anti-GABARAPL1 Antibody: synthetic peptide directed towards the N terminal of human GABARAPL1. Synthetic peptide located within the following region: MKFQYKEDHPFEYRKKEGKIRKKYPDRVPVIVEKAPKARVPDLDRKYL
Formulation:	Liquid. Purified antibody supplied in 1x PBS buffer with 0.09% (w/v) sodium azide and 2% sucrose. <i>Note that this product is shipped as lyophilized powder to China customers.</i>
Purification:	Affinity Purified
Conjugation:	Unconjugated
Storage:	Store at -20°C as received.
Stability:	Stable for 12 months from date of receipt.
Predicted Protein Size:	14 kDa
Gene Name:	GABA type A receptor associated protein like 1
Database Link:	NP_113600 Entrez Gene 23710 Human Q9H0R8
Background:	GABARAPL1 increases cell-surface expression of kappa-type opioid receptor through facilitating anterograde intracellular trafficking of the receptor.
Synonyms:	APG8-LIKE; APG8L; ATG8; ATG8B; ATG8L; GEC1
Note:	Immunogen sequence homology: Dog: 100%; Pig: 100%; Rat: 100%; Horse: 100%; Human: 100%; Mouse: 100%; Bovine: 100%; Rabbit: 100%; Guinea pig: 100%



[View online »](#)

Protein Pathways: Regulation of autophagy

Product images:

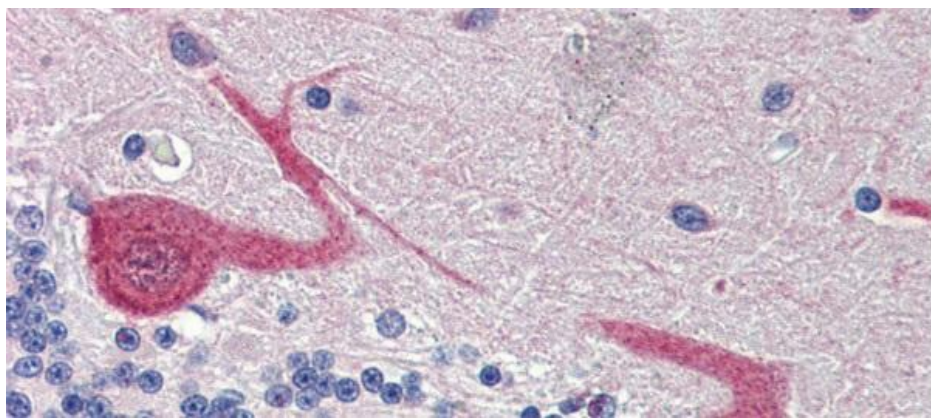


WB Suggested Anti-GABARAPL1 Antibody Titration: 1 ug/ml; Positive Control: 293T cells lysate
GABARAPL1 is strongly supported by BioGPS gene expression data to be expressed in Human HEK293T cells

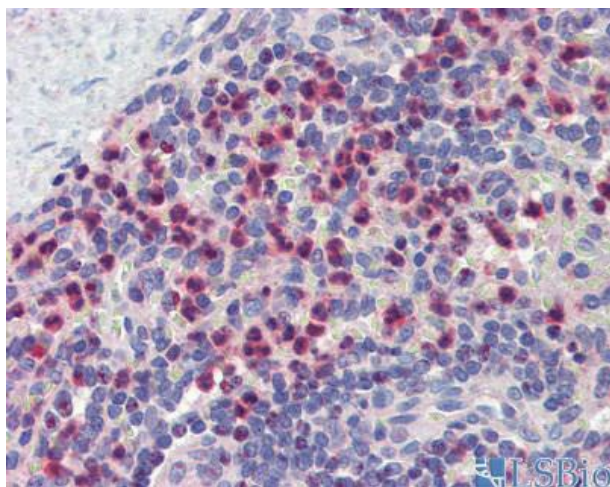


Host: Rabbit
Target Name: GABARAPL1
Sample Tissue: HeLa Cell Lysate
Antibody Dilution: 1.0ug/ml

Host: Rabbit; Target Name: GABARAPL1; Sample Tissue: HeLa Whole Cell lysates; Antibody Dilution: 1.0 ug/ml



Immunohistochemistry with Human Brain lysate tissue at an antibody concentration of 5.0 ug/ml using anti-GABARAPL1 antibody



Anti-GABARAPL1 antibody IHC staining of human spleen. Immunohistochemistry of formalin-fixed, paraffin-embedded tissue after heat-induced antigen retrieval. Antibody concentration 5 ug/ml.