

Product datasheet for **TA333630**

C22orf13 (GUCD1) Rabbit Polyclonal Antibody

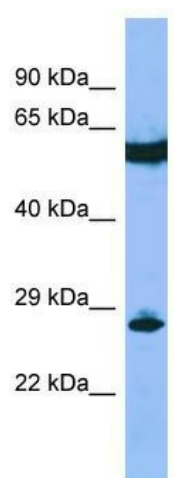
Product data:

Product Type:	Primary Antibodies
Applications:	WB
Recommended Dilution:	WB
Reactivity:	Human
Host:	Rabbit
Isotype:	IgG
Clonality:	Polyclonal
Immunogen:	The immunogen for Anti-C22orf13 Antibody is: synthetic peptide directed towards the middle region of Human C22orf13. Synthetic peptide located within the following region: RHRFCTQLGVDKGYKNQSFYRKHFDETRVNQLFAQAKACKVLVEKCT
Formulation:	Liquid. Purified antibody supplied in 1x PBS buffer with 0.09% (w/v) sodium azide and 2% sucrose. <i>Note that this product is shipped as lyophilized powder to China customers.</i>
Purification:	Affinity Purified
Conjugation:	Unconjugated
Storage:	Store at -20°C as received.
Stability:	Stable for 12 months from date of receipt.
Predicted Protein Size:	27 kDa
Gene Name:	guanylyl cyclase domain containing 1
Database Link:	NP_113632 Entrez Gene 83606 Human Q96NT3
Background:	The function of this protein remains unknown.
Synonyms:	C22orf13; LLN4
Note:	Immunogen sequence homology: Dog: 100%; Pig: 100%; Rat: 100%; Horse: 100%; Human: 100%; Mouse: 100%; Rabbit: 100%; Guinea pig: 100%; Bovine: 86%; Zebrafish: 79%



[View online »](#)

Product images:



Host: Rabbit; Target Name: C22orf13; Sample
Tissue: RPMI-8226 Whole Cell lysates; Antibody
Dilution: 1.0 ug/ml.