

Product datasheet for **TA333629**

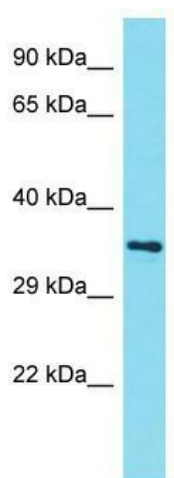
AMMECR1L Rabbit Polyclonal Antibody

Product data:

Product Type:	Primary Antibodies
Applications:	WB
Recommended Dilution:	WB
Reactivity:	Human
Host:	Rabbit
Isotype:	IgG
Clonality:	Polyclonal
Immunogen:	The immunogen for Anti-AMMECR1L Antibody is: synthetic peptide directed towards the N-terminal region of Human AMMECR1L. Synthetic peptide located within the following region: EPKLAAGCCGVKKPKLSGSGTHSHGNQSTTVPGSSSGPLQNHQHVDSSSG
Formulation:	Liquid. Purified antibody supplied in 1x PBS buffer with 0.09% (w/v) sodium azide and 2% sucrose.
Purification:	Affinity Purified
Conjugation:	Unconjugated
Storage:	Store at -20°C as received.
Stability:	Stable for 12 months from date of receipt.
Predicted Protein Size:	34 kDa
Gene Name:	AMMECR1 like
Database Link:	NP_113633 Entrez Gene 83607 Human Q6DCA0
Background:	The function of this protein remains unknown.
Synonyms:	FLJ38552; MGC4268
Note:	Immunogen sequence homology: Dog: 100%; Horse: 100%; Human: 100%; Mouse: 100%; Bovine: 100%; Rat: 93%; Rabbit: 93%; Pig: 86%; Guinea pig: 86%



[View online »](#)

Product images:

Host: Rabbit; Target Name: AMMECR1L; Sample Tissue: NCI-H226 Whole Cell lysates; Antibody Dilution: 1.0 ug/ml.