

Product datasheet for TA333621

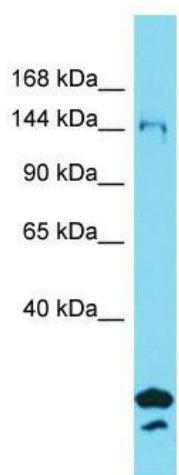
SYDE2 Rabbit Polyclonal Antibody

Product data:

Product Type:	Primary Antibodies
Applications:	WB
Recommended Dilution:	WB
Reactivity:	Human
Host:	Rabbit
Isotype:	IgG
Clonality:	Polyclonal
Immunogen:	The immunogen for Anti-SYDE2 Antibody is: synthetic peptide directed towards the N-terminal region of Human SYDE2. Synthetic peptide located within the following region: ENRVLSVPPDQRITLTLDFENAYGSSMKGRELEELKDNIEFRGHKPLNSI
Formulation:	Liquid. Purified antibody supplied in 1x PBS buffer with 0.09% (w/v) sodium azide and 2% sucrose. <i>Note that this product is shipped as lyophilized powder to China customers.</i>
Purification:	Affinity Purified
Conjugation:	Unconjugated
Storage:	Store at -20°C as received.
Stability:	Stable for 12 months from date of receipt.
Predicted Protein Size:	131 kDa
Gene Name:	synapse defective Rho GTPase homolog 2
Database Link:	NP_115560 Entrez Gene 84144 Human Q5VT97
Background:	SYDE2 is a GTPase activator for the Rho-type GTPases by converting them to an inactive GDP-bound state.
Synonyms:	RP11-33E12.1
Note:	Immunogen sequence homology: Human: 100%; Rat: 79%; Horse: 79%; Rabbit: 79%



[View online »](#)

Product images:

Host: Rabbit; Target Name: SYDE2; Sample
Tissue: OVCAR-3 Whole Cell lysates; Antibody
Dilution: 1.0 ug/ml.