

Product datasheet for **TA333617**

MNF1 (UQCC2) Rabbit Polyclonal Antibody

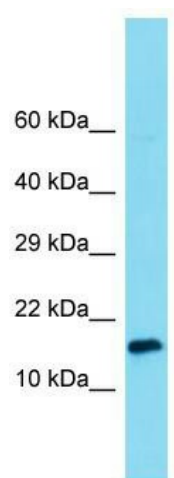
Product data:

Product Type:	Primary Antibodies
Applications:	WB
Recommended Dilution:	WB
Reactivity:	Human
Host:	Rabbit
Isotype:	IgG
Clonality:	Polyclonal
Immunogen:	The immunogen for Anti-MNF1 Antibody is: synthetic peptide directed towards the C-terminal region of Human MNF1. Synthetic peptide located within the following region: DTSFSGLSLEEYKLILSTDTLEELKEIDKGMWKKLQEKFAPKGPPEEDHKA
Formulation:	Liquid. Purified antibody supplied in 1x PBS buffer with 0.09% (w/v) sodium azide and 2% sucrose. <i>Note that this product is shipped as lyophilized powder to China customers.</i>
Purification:	Affinity Purified
Conjugation:	Unconjugated
Storage:	Store at -20°C as received.
Stability:	Stable for 12 months from date of receipt.
Predicted Protein Size:	13 kDa
Gene Name:	ubiquinol-cytochrome c reductase complex assembly factor 2
Database Link:	NP_115716 Entrez Gene 84300 Human Q9BRT2
Background:	This gene encodes a nucleoid protein localized to the mitochondria inner membrane. The encoded protein affects regulation of insulin secretion, mitochondrial ATP production, and myogenesis through modulation of mitochondrial respiratory chain activity.
Synonyms:	bA6B20.2; C6orf125; Cbp6; M19; MNF1
Note:	Immunogen sequence homology: Human: 100%; Rat: 79%; Mouse: 79%



[View online »](#)

Product images:



Host: Rabbit; Target Name: MNF1; Sample Tissue: 293T Whole Cell lysates; Antibody Dilution: 1.0 ug/ml.